

Isle of Man



SIGHTS...

Visit the World's first entire country to be awarded UNESCO Biosphere status

SOUNDS...

There is a year-round buzz to the Island no more so than when the TT is in town

TASTES...

With a wealth of natural ingredients the Island is alive with a vibrant food and drink scene

TRAVEL IN STYLE!

The adventure begins as soon as you're on board...



EXPERIENCE

No need to worry about luggage fees – just bring everything you need to explore the island, even the dog! Once you're on board you can wander around, stretch your legs, and even enjoy a little retail therapy in our on-board shop. With two cinema lounges on our fast craft and more to entertain the kids too, you'll all love the experience of sailing across the Irish Sea...



SHOP

RELAX

On board our vessels there is a choice of comfortable seating, including the option of upgrading to the Premium Lounge or selecting reserved seating. Can there be any better way to travel to the island?



SAVOUR

Hungry? There's delicious food and drink on-board, with ample space to sit back and enjoy – so you'll arrive refreshed and raring to go!



BOOK THE FERRY TO
THE ISLE OF MAN NOW!

STEAM-PACKET.COM

For the latest offers and news,
follow us on Facebook and Twitter



Awaken your senses on this enchanted Island

WELCOME



Ideally located in the centre of the British Isles, almost equidistant from Ireland, England, Wales and Scotland, the Isle of Man is a self-governing kingdom that's as independent as it is individual.

This distinct destination, rich in Norse and Celtic heritage, offers each and every visitor a sensory overload of experiences, whether you're scaling the summit of Snaefell, the Island's highest peak, on the Mountain Railway and gazing over the seven kingdoms or taking a pleasant stroll along the 2 mile Victorian promenade of Douglas, the Island's capital.

There's plenty for the Manx people to be proud of on their fair isle, not just the 221 square miles of stunning landscape, but also being awarded

UNESCO status as a world biosphere region – the first entire country to gain this prestigious accolade. If that's not enough to boast about, the Island is also the unrivalled motorsport capital of the world. This year there's a host of exciting events, along with the essentials of Island life.

It's time for you to feel the soft sand as you walk barefoot on beautiful beaches and dine out on picturesque waterfronts whilst enjoying the local dish of Queenies or cornets filled with delicious Manx ice cream. There is a Manx saying 'Traa dy Liooar', which means 'time enough' or 'take it easy' and we've no doubt that you will.

**COME TO YOUR SENSES,
COME TO THE ISLE OF MAN.**

3

The Department of Economic Development (a Department of the Isle of Man Government) ("the Department") whilst having taken reasonable care to ensure that the information in this guide was accurate at the time it was added, does not accept responsibility for any entry provided by any advertiser and shall not be liable for any losses or damage that anyone may suffer as a result of relying on the information provided by any advertiser. The advertisements and index information in this guide are supplied by the advertisers concerned and the Department cannot guarantee the information is accurate. No recommendation by the Department of any tourist premises is implied by inclusion in this guide. Prices quoted here for accommodation have been supplied by the advertisers and, where appropriate, are inclusive of VAT at the current (Isle of Man) rate of 5% for accommodation providers. The ratings which appear on the accommodation advertisements in this guide were correct at the time of publication but may be subject to change. Accommodation shown as 'pending' has not been awarded a final rating prior to publication. All operators and proprietors offering package holidays in the guide have to comply with the current EU Directive on Package Travel. All information correct at time of going to print.

Front Cover Image: Garwick Beach.

© Department of Economic Development 2017

For more information call +44 (0) 1624 686766

**FOLLOW
US ONLINE...**

 /VISITISLEOFMAN

 INSTAGRAM.COM/VISITISLEOFMAN

 YOUTUBE.COM/VISITISLEOFMAN

 @VISITISLEOFMAN



Photo Credits:

Andy North, Manx National Heritage, Mark Boyd, Dave Kneale, Bill Dale, Liam Gilman, The Venture Centre, Adventurous Experiences, Ron Strathdee, Glenn Whorrall, Simon Williams, Gary Weightman, Vivid & Jill Jennings.

CONTENTS



6 IT'S IN OUR NATURE

Visit the world's first entire country to be awarded UNESCO Biosphere status and discover what makes the Isle of Man so fascinating

10 FEEL ALIVE

Escape the bright lights and challenge yourself in natural surroundings

14 OFF THE BEATEN TRACK

Welcome to a real walker's paradise, where familiar experiences are made extraordinary by the Island's stunning landscape

16 CAPTURE THE CULTURE

Wherever you go you'll find culture and heritage around every corner

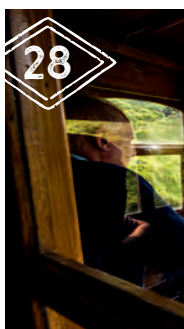
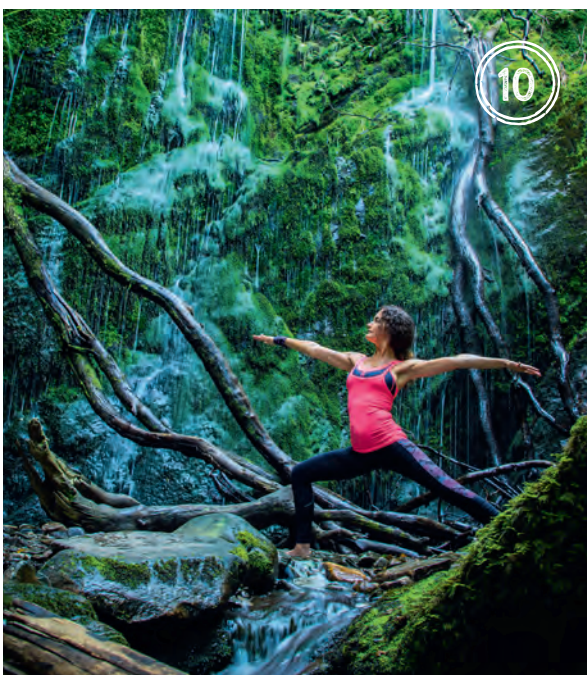
20 ISLAND ARTISANS

With a wealth of natural ingredients the Island is alive with a vibrant arts, crafts, food and drink scene

25 AN ISLAND PLAYGROUND

Outdoor adventure that will inspire and excite your active imagination

4



28 ON THE RIGHT TRACK

Wherever you go you're never too far away from taking an unforgettable journey on a Manx heritage railway

32 THE OPEN ROAD

Find out why the Island's roads and trails have been a pilgrimage for petrol and pedal heads the world over

34 MANN AT NIGHT

Be dazzled when you visit one of the 26 official dark skies sites dotted around the Island

36 2017 EVENTS

A year-round guide to the unique and unforgettable experiences you can enjoy during your visit

38 ITINERARIES

Find out what you can do when you visit this year-round destination

40 BROADEN YOUR HORIZONS

43 ONE FINE STAY

44 MAP OF THE ISLE OF MAN

45 CHOOSE YOUR PERFECT ACCOMMODATION

47 DOUGLAS & THE EAST

54 PEEL & THE WEST

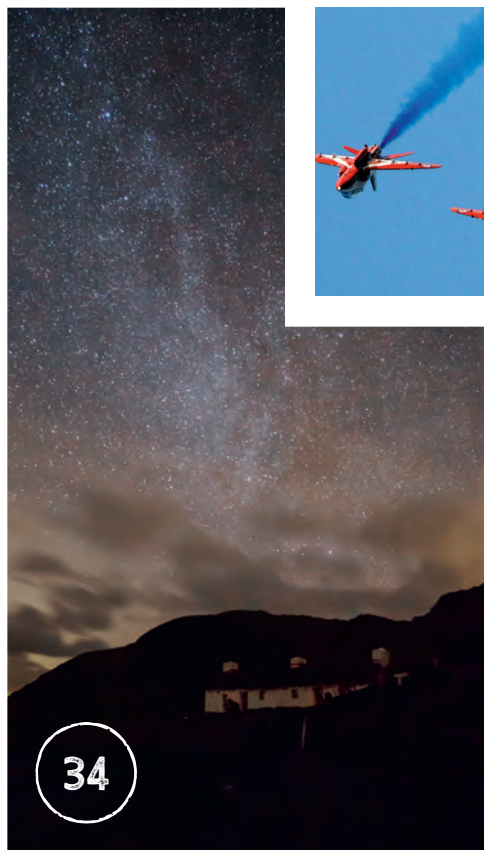
57 PORT ERIN & THE SOUTH

60 RAMSEY & THE NORTH

63 CAMPING & HOSTELS

64 ACCOMMODATION INDEX

66 USEFUL TIPS & INFORMATION



SEE

HEAR

SMELL

TASTE

TOUCH

COME TO YOUR SENSES KEY...

Look out for the Extra Sensory boxes throughout our Visitor Guide, each one contains helpful hints and tips so that you can make the most of your trip and never miss a thing.

From tasting to touching, your senses will be brought to life when you visit the Isle of Man.

 visitisleofman.com 

It's IN OUR NATURE

Visit the world's first entire country to be designated UNESCO Biosphere status.

6



COAST AND SEA

Dive, paddle or sail your way around the coastline

UPLANDS

Scale new heights and enjoy 360° views

GLENS

Walk the sloping paths past tumbling waterfalls and deep rock pools

LOWLAND AND COASTAL HEATH

Bird watch and stroll the nature trails along the sand dune coastline

WETLANDS

Wear your wellies and wade through wet rushy pastures, watch out for swooping hen harriers

FARMLAND

Enjoy life down on the farm and discover rare breeds including Manx Loaghtan Sheep

TOWNS AND VILLAGES

Explore charming country hamlets and working harbour towns

EXTRA SENSORY

Visit one of the 6 'marine scene' stations set up around the Island by the Manx Wildlife Trust where you can spot many species of marine life.

manxwt.org.uk

Islanders know there is something very special about the Isle of Man and now it's internationally recognised - as the first entire country to be awarded the unique UNESCO Biosphere status. In a nutshell, it is all about keeping the Island a special place to live, work and visit and raise awareness of remarkable areas, projects and activities that are helping to make the Island unique.

In this treasure of a British Isle, you can make yourself at home and live like a local while admiring the diverse wildlife in a spectacular natural backdrop.

Discover its natural beauty, not only evident in the established plantations, but across its entire 221 square miles. With a population of around 85,000 - there is a great sense of space and a huge variety of unspoilt landscape in which to discover a host of natural treasures. Boasting a range of terrains, from a wide coastal expanse to green and mountainous uplands, to wide yet dry plains, it's a microcosm that has the best of the British Isles.

The coastline provides the perfect hotspot for marine life. Spot basking sharks, common dolphins and Risso's dolphins in summer, and bottlenose dolphins and minke whales in the winter. There have also been occasional sightings of leather back turtles, sunfish and humpback whales. There's also a year-round population of grey seals and the odd common seal that are best spotted from the southwest coast.

So stroll the sweeping sandy beaches, uncover the hidden pebbly bays, encounter rugged coastline cliffs and wide plains, climb uplands with magnificent routes, wander green woods and marvel at the magical glens.

Don't forget to grab your crab line and bait and head to the crabbing hotspots, spend time splishing, splashing and dam building, discovering your inner adventurer.



Fiercely proud of its diverse culture and fascinating heritage this sea bound kingdom has a captivating story to tell – one which stretches back thousands of years.

Legend has it that the Island's name comes from the Celtic sea god Manannan Mac Lir who protected the land from invaders by shrouding it in a cloak of mist.

It is these folklore stories, and the history that follows, which are carefully safeguarded by the Manx people to ensure the Island doesn't lose any of its unique charm or character.

A visit to the Isle of Man will be a voyage of discovery and will present the chance to explore Celtic crosses and ancient Viking burial grounds, as well as a number of other heritage landmarks which tell the story of Mann.

Hear tales of giants and fairies - which were said to intervene in the lives of ordinary people – and although times have changed many of the original customs and superstitions live on.

Modern day culture is showcased throughout the year with a packed programme of entertainment including the annual inter-Celtic festival – Yn Chruinnaght – where the native Manx Gaelic language, song and dance is celebrated.

The Isle of Man's strong identity is due in part to its independence and the fact that it is self-governing. It has the oldest continuous parliament in the world, Tynwald, which dates back over 1,000 years. You can tour the Tynwald building and visit Tynwald Hill – where parliament meets in the open air once a year.

8



Whatever time of year you visit you can walk in the footsteps of the Island's ancient ancestors and indulge in the colourful history - cats with no tails, folklore and fairies, castles and Celtic and Viking kingdoms. This is a historical destination that can't be emulated.



MORE THAN **40%**

OF THE LAND ON THE ISLAND IS UNPOPULATED AND UNCULTIVATED, SO YOU DON'T HAVE TO GO FAR TO FEEL AWAY FROM IT ALL

EXTRA SENSORY



Visit what was one of the last strongholds of the Manx language and way of life in the traditional crofter's village of Cregneash. Situated in the South you can step inside original cottages to see how the Island's crofters lived and hear stories of their rugged self – sufficient lifestyles. You can see, touch, taste and smell the seasonal produce on the Garden Walk, stroke Manx cats and see the indigenous Manx Loaghtan sheep in their natural habitat.

manxnationalheritage.im



Feel ALIVE



10

Escape the bright lights and challenge yourself in natural surroundings. If you want to recharge or simply heal your mind and soul give your body a well-deserved boost and get away from it all in the Isle of Man.

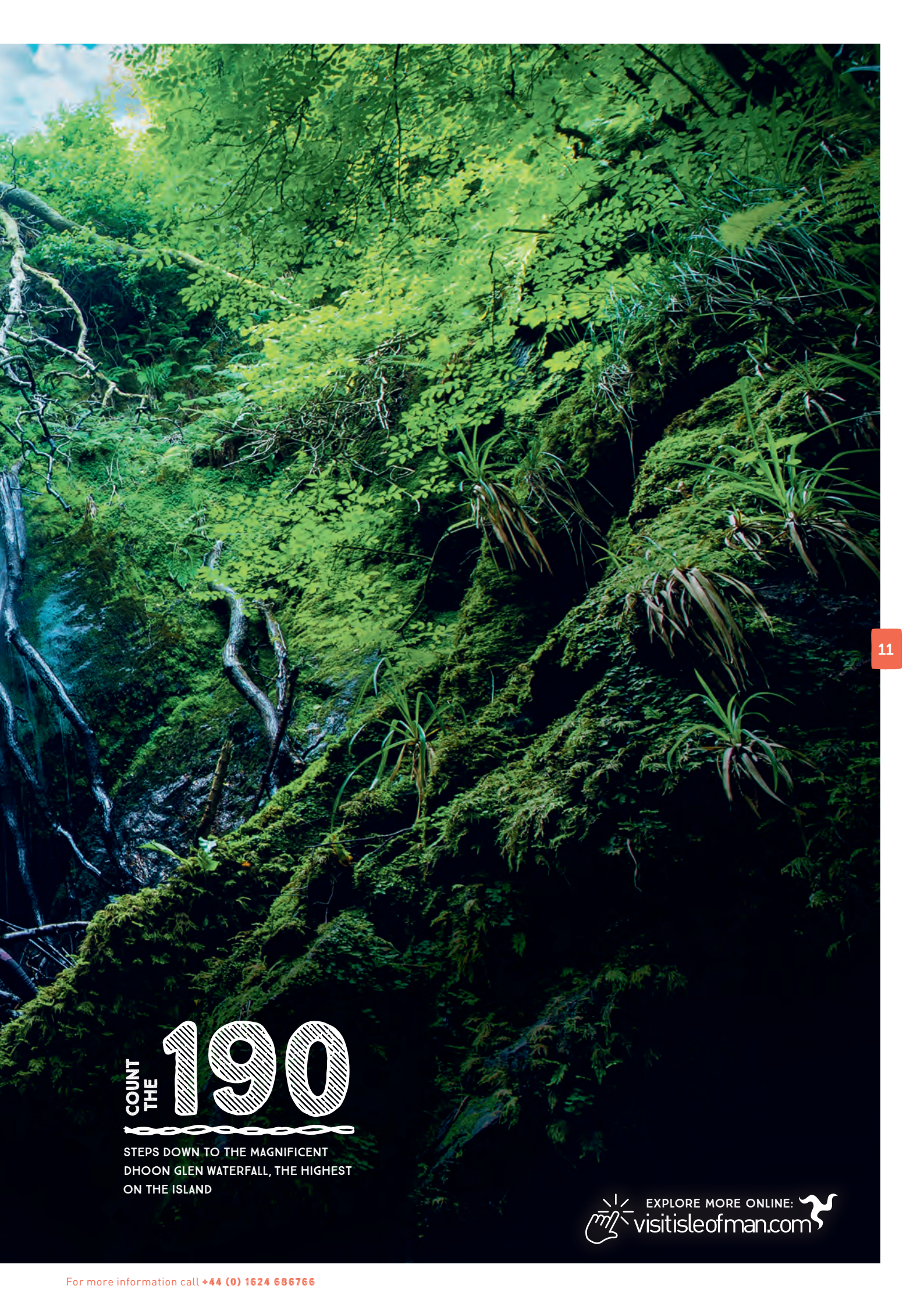
With a wealth of yoga and pilates instructors to help you unleash your inner zen, a modern retreat and tranquil surroundings, there's good karma to be found in every corner of the Island.

Even if you're not a fully-fledged yogi you can try almost anything here. The Island is a true escape from the hum drum, so take a Segway tour safari through the beautiful glens, tone up taking a dip wild swimming in the refreshing water or simply stretch your legs on a beach walk and enjoy the serenity of the countless sea views.

Then dine and unwind on a farm stay or kick back in front of a roaring campfire with a few more creature comforts while glamping or staying in a camping pod.

No matter what you choose to do, the Isle of Man is perfect for a healing and healthy holiday that will leave you both physically and mentally refreshed.





COUNT
THE
190

STEPS DOWN TO THE MAGNIFICENT
DHOON GLEN WATERFALL, THE HIGHEST
ON THE ISLAND

EXPLORE MORE ONLINE: 
visitisleofman.com



34 OF JOSEPH PILATES' MAT EXERCISES CREATED AT KNOCKALOE WW1 INTERNMENT CAMP ARE NOW PRACTICED IN PILATES STUDIOS WORLDWIDE

EXTRA SENSORY

CHOOSE YOUR SPOT

There are plenty of places where you can exercise a little bit of escapism – hotels with spa facilities, retreats or luxury lodges give you the chance to seclude yourself surrounded by peace and tranquillity.



12



BRIGHTLIFE

A WORLD AWAY FROM EVERYDAY LIFE...



@BrightlifeIOM



WEEKEND RETREATS

Offering a range of mind, body & spirit workshops including yoga, pilates, nutrition, life coaching, art and spirituality, Brightlife's weekend retreats provide a tranquil and luxurious space for you to learn, develop, escape and unwind.

For further information on all our workshop retreats please visit our website at www.brightlife.com

SPA RETREATS

The island's only holistic spa with stunning rural views. The perfect place to relax and rejuvenate during your stay on the Isle of Man...

For bookings and enquiries please call our friendly team on **01624 880318**

BEN FOGLE'S ISLAND CHALLENGE INTERVIEW



Q What has been your biggest challenge to date?

A That's a tough one. I'd have to say rowing the Atlantic was my biggest challenge so far. The journey took two months to complete. It was a huge physical and mental challenge.

Q What do you look for in an adventure?

A I always look for something that tests me and pushes me to my limits. If you haven't failed at something then you aren't trying hard enough.

Q What is it about islands that you love so much?

A I have always loved islands. They have a uniqueness that is difficult to define. I have travelled to hundreds of islands over the years and each and every one of them is unique and different from the next.

Q What did you enjoy about your adventure on the Isle of Man?

A I have always loved the Isle of Man. It is such a unique island full of surprises with a rich and varied landscape.

Q What was the highlight of your adventure?

A I tried lots of different activities on the Isle of Man, but the highlight had to be abseiling down a cliff in the North of the Island.

Q What makes the Isle of Man unique?

A The people absolutely make the Isle of Man unique.



For a great day out, visit the

CURRAGHS WILDLIFE PARK!

ISLE OF MAN

Connecting to Nature

Over 70 species of animals from around the world in a stunning wetland habitat!

Cafe, play areas, miniature railway, and more!

Summer season - Open daily: 10am-6pm
Winter season - Open Fri-Sun: 10am-4pm

For more information call 01624 897323
curraghswildlifepark.im

Like Us On facebook

Fly to the

ISLE OF MAN

citywing

FROM

- Blackpool
- Belfast
- Glasgow
- Gloucestershire
- Newcastle

BOOK ONLINE
citywing.com

GO-MANN ADVENTURES

GUIDED WALKS, TOURS & ADVENTURES ON THE ISLE OF MAN

Find us on Tripadvisor!
afoxon@iom.com
+ 44 (0) 7624 480129
www.go-mannadventures.com

OFF THE BEATEN TRACK



Welcome to a real walker's paradise, where familiar experiences are made extraordinary by the Island's landscape. Take in the diverse terrain ranging from winding coastal pathways to woodland walks along quiet rivers.

There's so much to see and do on foot, whether you're after a relaxing sightseeing stroll or a challenging hike, you can lose yourself along the rugged cliffs and through the rolling hills.

RAILWAY RAMBLES

Relax on one of the self-guided railway walks, where you can combine a slice of Victorian travel along with a much-loved scenic walking route. There are 11 self-guided walks for you to enjoy, beginning or ending with a ride on the historic Steam Railway. All the walks start at different stations in the South of the Island, and range from gentle strolls to ambitious hikes across a wide range of landscapes.



FESTIVAL FOOTSTEPS

The Isle of Man's appetite for walking has resulted in a series of fantastic events throughout the year. If you're looking for your next walking holiday, the four day Isle of Man Walking Festival takes place over the early May bank holiday in 2017. The festival allows walkers of different abilities to choose from a range of countryside, coastal and mountainous walks. Booking is essential due to the popularity of the festival.

FANCY A CHALLENGE?

The Raad ny Foillan is a 153km/95-mile trek that follows a rugged coastal footpath around the entire Island! The route can be split into as many stages as you like and walked in either direction although the traditional route begins and ends at Douglas harbour and walks clockwise with the sun.



Or find the 46 Geocaches hidden along the Millennium Way, which was established in 1979 to celebrate the millennium year of Tynwald. At a distance of 28 miles (45 kilometres) the Millennium Way runs from Ramsey in the North to Castletown in the South and can be completed over 1, 2 or 3 days.

EXTRA SENSORY



After an appetite building day of walking, why not explore what the many 'Taste - Walkers Welcome' establishments have on offer? Even walkers with muddy boots and clothing will still experience a warm welcome at these popular places to eat and drink.

visitisleofman.com/taste

CAPTURE THE CULTURE

Wherever you go you'll find culture and heritage around every corner, along with captivating stories and customs that maintain the 'Manxness' throughout the many towns, villages and national heritage sites.

With plenty of photo opportunities make sure you've got enough camera memory to capture the historic buildings set in picture perfect scenery.

16

DOUGLAS & DOUGLAS HEAD

Start your journey of cultural discovery in Douglas, the charming capital which is brimming with all things historic. Stroll along the 2 mile promenade, where you can't help but be whisked back to a Victorian age. Gaze out to sea and admire the Tower of Refuge, a small castle-like structure built by Sir William Hillary to house sailors shipwrecked on St Mary's Isle. Pass the grand hotels and galleries towards the Gaiety Theatre and Villa Marina the cultural hub, both venues host top class indoor and outdoor events all year round. For a treasure trove of Island artefacts and interactive displays visit the Manx Museum, the perfect place to learn about the Island's past.

For the best views of the capital's sweeping bay, make your way up to Douglas Head, accessible along the historic Marine Drive, with its imposing gateway that makes for the perfect picture. Also perched on Douglas Head is the famous Great Union Camera Obscura. Built in the 1890s the curious building is one of only four still in use in the British Isles and was originally used as a form of entertainment by spying on tourists on the surrounding headland.



PETER KELLY

ISLE OF MAN VICTORIAN SOCIETY



What is a camera obscura and how does it work?



Camera obscura is Latin for 'darkened room'. First used by the Chinese in the 5th century B.C., Leonardo da Vinci is believed to have used one and they became very popular in Victorian times, particularly in seaside towns. They worked on the same principle as an old fashioned camera. The aperture is set on top of the building, light from the aperture hits a mirror and projects an image of the outside onto a white painted table in a darkened room below. To obtain a 360 degree view of what was outside the aperture had to be rotated, usually by those standing around the table pushing a bar at roof level around in a circle. The disadvantage of this was the picture went upside down for those looking at it!



What makes the Great Union Camera Obscura unique?



It is unique thanks to Mr. J. R. Fielding who designed and patented a multi lens obscura, that welcomed its first visitors in the summer of 1892. It had 12 lenses, each projected onto a separate table so every picture was the right way up. It was called. The Great Union Camera Obscura as it was the first to bring together multiple pictures.



When is the best time to visit?



When the Manx flag is flying it's open and it is at its best when the sun is bright! It is manned by volunteers from the Isle of Man Victorian Society from May through to mid-September on weekends and Bank Holidays but does not operate in mist and rain.



THE ISLAND'S PREMIER ENTERTAINMENT VENUE

VILLA MARINA - ROYAL HALL



The prestigious venue is host to some of the biggest names in comedy and music with a diverse array of live shows running throughout the year. This stunning venue is also the perfect space for weddings and corporate functions.

GAIETY THEATRE



Steeped in history and tradition this breathtakingly restored Victorian theatre offers a year-round programme of plays, culture, comedy and family entertainment. Behind the scenes tours run on Saturdays throughout the summer.



BROADWAY CINEMA

Showing a daily mix of family viewing and the latest blockbusters seven days a week.



DRAGON'S CASTLE

With slides, tunnels, bridges and obstacles, Dragon's Castle is the perfect venue for young explorers. Pop in & Play session times can be found on the website.



01624 600555

VillaGaiety @VillaGaiety villagaity



LAXEY & THE LAXEY WHEEL

Leaving Douglas, head north up the East coast to the village of Laxey, home to one of the Island's most popular visitor attractions, the Great Laxey Wheel, or Lady Isabella as she is locally known. This iconic example of Victorian engineering is the largest working waterwheel in the world and was originally used to pump water from the Laxey Mines. Take the heritage trail to watch the mighty wheel turn, climb to the top for panoramic views and trek up to the mine ruins to learn more about the lives of the Laxey miners. Don't miss the smaller second waterwheel, the Snaefell Wheel (Lady Evelyn) which is located in Laxey Valley Gardens just a few minutes away on foot. For an alternative view of Lady Isabella take the Snaefell Mountain Railway which starts at Laxey station and takes you to the summit.

18



PEEL & ST PATRICK'S ISLE

In the West there's the thriving fishing port of Peel, with several museums and heritage sites including the imposing Peel Castle, located on St Patrick's Isle, and the House of Manannan. This is where the mythological sea god, Manannan, guides you through the Island's rich history. Peel is also home to the Leece Museum which houses objects relating to the fishing port and the Manx Transport Heritage Museum, an Aladdin's cave of motoring memorabilia.



RAMSEY

Further north you'll find the Island's second largest town, Ramsey, home to The Grove Museum an idyllic insight into the Victorian and Edwardian eras. There's also the historic Milntown Estate with its fine collection of vintage cars and motorcycles.





ST JOHN'S & TYNWALD HILL

Just outside Peel you'll find the iconic Tynwald Hill at St John's, the ancient meeting place of the Manx parliamentary assembly. No visitor to the Isle of Man in early July should miss the Tynwald Day ceremony, part of the Manx National Week celebrations. Held on the hill annually on July 5th, since 1417, the event sees the proclamation of all laws passed by the Island's parliament over the course of the previous year, read in both Manx and English.

Thousands of spectators travel to St John's to watch the ceremony, procession and attend the accompanying fair, market and free concerts. Even if you can't be there for Tynwald Day, be sure to visit the historic site and its Millennium Stone, erected from stones collected from the Island's parishes to celebrate the 1,000th anniversary of Tynwald in 1979.

Directly opposite the hill is the Tynwald Inn, marking the start and finish line of the old 15 mile St John's TT Race Course, with a welcoming fire it's the perfect stop off for a glass of fine wine or a pint of Manx ale. A short walk away is Tynwald Mills, a shopping centre housed in a historic mill, it's also a venue for fashion shows and farmers markets throughout the year.

EXTRA SENSORY



A little way out of Castletown is Ballasalla, a cultural gem that is often missed, home to Rushen Abbey - originally a home for monks of the Sauvignac Order.

manxnationalheritage.im



CASTLETOWN & CASTLE RUSHEN

In the South lies Castletown, the Island's ancient capital, where you'll find Castle Rushen, one of the best preserved medieval castles in the world. This former royal residence was built on the site of an earlier 13th century Viking stronghold. Climb the winding staircases for the best views.

Also of note in Castletown is the Old House of Keys, where you can join a debate. At the Nautical Museum you can uncover the story of the inventive George Quayle and his most significant surviving creation, Peggy, the earliest known example of a British armed yacht. Find out what excavations revealed about nautical life in Castletown and the exploits and ingenuity of George Quayle, who designed his own cabin room and private dock. Hear about the work we are doing to conserve Peggy to ensure she survives her third century.



ISLAND *artisans*

With a wealth of natural ingredients the Island is alive with a vibrant arts, crafts, food and drink scene, so you'll be spoilt for choice with the variety of goods and produce on offer.

20



EXPLORE MORE ONLINE: 
visitisleofman.com



1.



2.



3.



4.



5.



6.

1. THE ALPINE

Serving food as fresh as a mountain breeze, nutritious soups, chunky sandwiches, big breakfasts and tasty cakes!

01624 619249
thealpinecafe.com

2. FLO THE COFFEE VAN

Keep a look out for Flo, home baked and locally sourced, not just coffee on offer, go have a nibble...

01624 844181
flothecoffeevan.com

3. ISLE OF MAN CREAMERY

Isle of Man Creamery is a co-operative of dairy farmers whose farm-assured herds produce the purest milk for all their products.

01624 632000
isleofmancreamery.com

4. THE ORIGINAL MANX FUDGE FACTORY

Find the sweet aroma of success, the hidden gem of Manx confectionery: the Island's only fudge, chocolate and toffee factory.

01624 825858
manxfudgefactory.com

5. MANX CIDER

Award winning West Country style craft cider. Available at various pubs throughout the Island.

01624 843636
manxcider.co

6. MANX ICES

Award winning luxury ice cream hand made with milk and cream from local dairy farmers.

01624 673737
manxices.com



MY MEAL WAS EXCELLENT,
IMAGINATIVE AND IMPECCABLY
SERVED - I DISCOVERED THIS
IS VERY MUCH THE NORM
FOR THE ISLAND, A HAVEN
FOR FOODIES.

BRISTOL POST



22

With all the great local produce on offer there's no shortage of places to drink and dine on the Isle of Man. Each town and village has a selection of establishments offering traditional favourites and contemporary cuisine. Traditional seaside resorts and bustling fishing harbours have the best seafood, delivered straight from the sea to the plate, and country village establishments have a daily supply of fresh meat delivered directly from the farms to the fork.



Choose the ideal location from quaint quaysides to secluded cliff side cafés and try the many local delicacies that are a feast for the senses.

Enjoy succulent seafood sandwiched in freshly baked sourdough bread, the famous kippers and Queenies, award winning cheese or hand reared Loaghtan Lamb. Top it off with Manx ice cream, fudge or confectionery and wash it down with locally produced fruit juices.

For a place that's modest in size you'll always be able to enjoy fantastic food adventures with speciality seasonal produce.



To ensure that excellent produce prevails, the quality assurance scheme called Taste Isle of Man was introduced to recognise the quality of many of the establishments serving food. The scheme offers two categories of accreditation – Highest Quality Assured and Quality Assured. Those actively using and promoting local produce are also awarded the Harvest Accolade.

Make sure you pick up a Taste Directory from one of the Tourist Information Points when you arrive. Look out for the Taste accredited venues when you visit, each one will have a Taste logo in their window.



EXTRA SENSORY



Boost your confidence in the kitchen and perfect your food preparation skills on a cookery course through one of the Island's cookery schools.

Visiting in September? Come along to the Isle of Man Food and Drink Festival - a two day celebration of local produce and cookery packed full of demonstrations, sampling sessions and activities.

iomfoodanddrink.com



18
74

The Isle of Man's Pure Beer Act of 1874 which is still in force today, means that it is an offence for local brewers to use anything as a substitute for malt, sugar or hops in their brews, ensuring the beers are recognised by the Campaign for Real Ale (CAMRA) as quality tipples!

As the sun sets the Isle of Man comes to life. Live music mixed with local hospitality sets the mood for a great evening, which is the perfect time to try the many ciders, beers and spirits that are brewed and distilled here.



23

4G roaming*

now available from
manx telecom

room with us for...

99% population coverage and fantastic speeds

call 624 624 see in-store
visit manxtelecom.com/4Groaming

manx telecom

*selected networks only, terms and conditions apply.
see www.manxtelecom.com/4Groaming

**THE ISLE OF MAN'S
AMERICAN - STYLE
ALL MANX MEAT
HOT DOG
COMPANY**

PREMIUM, HIGH-QUALITY & GOURMET

- HORMONE FREE • ANTIBIOTIC FREE • GMO FREE

**ALL-NATURAL MANX MEAT FROM
BALLAKELLY FARM!**

**Fresh Steamed
ALL MANX Hot Dogs!**

@DavesDelicious www.davesdeliciousdogs.com



H&B

est. ISLE OF MAN 1898

PUBS & BARS

With traditional pubs and gastro style menus, the Isle of Man is a place to delight your taste buds, and the range of Manx food and drink has never been so diverse. At the heart of the island's food revolution sits Heron and Brearley. With over 110 years under their belt and 36 public houses on the Isle of Man they have been doing their thing for generations. You will find the Fine Ale & Food branding on many of their food sites and they have recently added 'Bella Pizza' to the H&B family, a range of authentic Italian stone-baked pizzas also available to takeaway.

For more information, please visit: pubsandbars.im

 @PubsandBarsIOM



BEER FOR PURISTS. PURE & SIMPLE

Here, amidst the pure shores and rolling glens of the Isle of Man, Okell's has been defined by our beautiful Island for over 150 years and guided, in all that we brew, by its unique Brewing Purity Law. The law was introduced after campaigning by Dr William Okell, founder of the Brewery. Due to the legal autonomy of the Isle of Man, the Free Mash Tun Act of 1880 which relaxed a tax on malt and other restrictions in the United Kingdom did not apply there, and so the Act remained upheld. Okell's smokey liquorice and chocolate beer, Aile, scooped 'the world's best' at the 2016 International Beer Challenge in London. Further to this, its smooth and tropical 1907 pale ale earned silver, fending off competition from 700 entries across 30 countries.

 @Okells  @Okellsales



Come and visit the Source of Pure Pleasure! Our Brewery Tours are famous, especially for typically ending up in the Okell's In-House Bar.

Head online to find out more about our beer, brewing process or to book a tour at okells.co.uk

AN ISLAND Playground



25



If you love being outdoors whatever the weather, the Island's beauty and heritage attractions will inspire and excite your active imagination.

There is not a lot you can't do on this 221 square mile natural assault course, as the whole of the Island has something to offer. Why not visit one of the South coast beaches, a water wonderland where you can enjoy a great British seaside day out, enjoying activities above and below the sea surface from fishing and swimming to diving and sea kayaking.

EXPLORE MORE ONLINE:  visitisleofman.com

Peel has its golden sunsets and legendary castle by the sea. Storm the majestic fortress, scale Peel Hill to Corrin's Folly and reward yourself with stunning views of the West coast. Skim stones, take a walking trail and watch out for basking sharks along the secluded shingle areas of White Strand Beach and Niarbyl. After a day of adventure and exploring there's nothing better than enjoying an ice cream and Peel has some of the best on the Island.

In the East you'll find plenty of attractions to keep the kids entertained along with many of the glens where you can follow footpaths along streams that lead you down to the sea, passing waterfalls and wading through the rushing rapids. Go gorge scrambling with one of the activity centres or learn the art of bush craft and food foraging.

Heading north you'll discover the wild and untamed side of the Island. Curragh's Wildlife Park is home to wildlife from all over the world – including favourites such as meerkats and penguins. If you are lucky you might also see the famous wild wallabies. At the top of the Island lies the Ayres Visitor Centre and Nature Trail designated as an area of special scientific interest and a national nature reserve, with 8 km/5 miles of sand dunes to explore.

Head inland to the plantations and forests where you and your tribe can build dens, zip line and traverse the treetops. Ride one of the open gravel forest tracks or purpose built single track mountain bike trails. Saddle up and go horse riding or pony trekking through fantastic off road tracks out towards the beautiful and undulating Manx hills. This spectacular natural playground will exercise any imagination, whatever your age, as you soak up the breathtaking views of the land and sea.



THERE ARE **35**

BEACHES SCATTERED ALONG THE MANX COASTLINE, RANGING FROM SANDY STRETCHES TO PEBBLE COVES, PERFECT FOR PICNICS AND PADDLING



EXTRA SENSORY



ADVENTURE RAIN OR SHINE

If the heavens open, head indoors to pit your wits against the walls of the indoor climbing centre, Hot Rocks, visit the National Sports Centre or perfect your ten pin bowling skills. Alternatively take shelter and build a den under the cover of one of the forests or woodlands.

EXPLORE MORE ONLINE:  visitisleofman.com 

ON the Right TRACK

Enjoy the journey, not just the destination. North, south, east or west, whatever your direction you're never too far away from taking an unforgettable journey on a Manx heritage railway.

28

The Isle of Man has some of the best heritage railways in the world, each one immaculately preserved so every journey takes you back to bygone times.

Jump on-board the open carriage of the Manx Electric Railway for one of the most scenic stretches of rail line in the British Isles, as the coastal breeze blows gently through your hair, surrounded by beautiful Manx countryside on one side and endless sea views on the other. As iconic as the San Franciscan Cable Cars, the Manx Electric Railway is one of the best ways to see the East coast with 17.5 miles of track and numerous stops for you to see more of the picturesque glens and villages.

If you choose to alight at the traditional village of Laxey there's plenty here to keep you occupied including Laxey Woollen Mills and the Great Laxey Wheel. If you prefer to travel onwards and upwards, 2,036 feet above sea level to be precise, then take the high railroad on the Snaefell Mountain Railway, starting at Laxey station.



1876

TAKE A TRIP ON THE WORLD'S
OLDEST HORSE DRAWN TRAMWAY
A TESTIMONY TO VICTORIAN
ENGINEERING AND ENDURANCE,
THE TRAMS HAVE BEEN IN
EXISTENCE ON THE ISLE OF MAN
SINCE 1876



As you climb the lofty heights of the Island's highest peak, Snaefell, listen to the commentary as you're transported up through Laxey Glen passing the Great Laxey Mine, shadowed by Lady Isabella and impressive steep hillsides.

Even higher along the narrow valley you'll pass the Bungalow, a famous TT landmark, the only other stop on the line. Once at the summit of Snaefell, which is Norse for Snow Mountain, you can enjoy refreshments from the mountain café or take the short pathway to the top and soak up the views from the only place in the British Isles where you can see the seven kingdoms - England, Ireland, Scotland, Wales, Heaven, Mann and the Sea.

If that leaves you wanting more Manx railway magic then sit back and head south on the Isle of Man Steam Railway. As you whistle through the ever changing landscape aboard a pristine loco watch the Island's history unfold before your very eyes. There's a choice of stops along the way including the ancient capital Castletown, with its wealth of attractions including the Nautical Museum, Castle Rushen and the Old House of Keys. At the end of the line you won't be disappointed when you reach Port Erin, a picturesque harbour town with a beautiful sandy beach.



EXTRA SENSORY



The railways also provide a range of special events such as Santa Trains, Ghost Trains and Snaefell Dining events. Or why not try an 'Ultimate Driving Experience' and become a driver for a day?

rail.im

BUY A "GO EXPLORE" CARD

With unlimited travel on buses, the Steam Railway, Manx Electric Railway, Snaefell Mountain Railway and Douglas Horse Trams, getting around is cost effective, as well as convenient.

gov.im

DAY TRIP MANX STEAM Railway

Wherever your steam ride takes you, make sure you stop off and explore the many heritage attractions and places of interest along the route.

RUSHEN ABBEY WALK

Alight at Ballasalla station for a leisurely walk (10½km/6½ miles) that covers beautiful countryside, rivers and open farmland. The trail takes you past Rushen Abbey, an old monastery from the 12th century, before heading into Silverdale Glen. Set on the River Silverburn, Silverdale is a beautiful and secluded glen, which also offers an extensive children's play area and boating lake.



PORT ERIN PIT STOP

At the end of the Steam Railway line you'll find the picturesque seaside town of Port Erin. Step off the train directly onto the platform into the Railway Museum, a shrine to all things steam train related featuring locomotives and other interesting rail relics.



Then stretch your legs with a strenuous coastal walk (14km/8½ miles) full of breathtaking scenery and the chance to spot a wide variety of wildlife. Start by ascending Milner's Tower, before winding round to the stony shores of Fleshwick Bay. Next, you can climb the summit of Lhiattee ny Beinnee to discover outstanding views of England, Wales and Ireland. This walk combines the wild beauty of the landscape with quiet village paths, giving you a real insight into life on the Isle of Man.

THE Open ROAD

From the fast and furious to the slow and sedate the Isle of Man's roads and trails have been a pilgrimage for petrol and pedal heads the world over.

32

The Island's roads are a landmark in their own right made famous by The Isle of Man TT. The course is a regular public road which rivals the Pacific Coast Highway, Stelvio Pass and Nurburgring. With views that stretch over the Island's 221sq miles.

The roads are busy during the TT fortnight in May-June and the Festival of Motorcycling in August-September, but for the rest of the year there's a slightly slower pace for you to enjoy the stunning scenery, with plenty of pit stops to park up and enjoy a picnic. Take the high road up May Hill from Ramsey for the best views along the Mountain section of the TT course. You'll want to ease off the gas to get a good view of the vistas in every direction.

For a real road trip experience head north to the Ayres National Nature Reserve, pitch up with your camper on the coast and seclude yourself in the sand dunes.

If you prefer being part of the peloton then test your prowess on the Island's assorted terrain, climb and sprint around the stomping ground of pro tour cyclists Cavendish and Kennaugh.

DREAM DRIVES & RIDES

THE CONTINUAL COAST – 75 MILES

Start on the impressive seafront of Douglas and for driver's privilege navigate anti-clockwise so you're in pole position for the endless and stunning sea views

FOLLOW THE LEADERS

British cycling is enjoying a fantastic renaissance and where else better to do it than in the Isle of Man, birth place of two of the greatest cyclists of the modern generation, Mark Cavendish and Peter Kennaugh. Follow in the tyre tracks of the Olympic medallists and Tour de France stage winners, taking in the varied colourful countryside, spectacular coastal views and pretty glen valleys along the way.



PIT STOP...

at the Sound Visitor Centre for spectacular views overlooking the Calf of Man.



Feel the wind rush through your jersey as you tuck down the many descents or go off road mountain biking through one of the forest trails, Byways or Greenway Roads. Alternatively, you can take an electric bike for a spin or head out on a Segway safari, whatever your ability there's enough two-wheeled fun for everyone. So load up your playlist and head over to one of the world's ultimate cycling and driving destinations.



EXTRA SENSORY



As you're driving or riding on the A5 between Douglas and Castletown, look out for the Fairy Bridge. Legend has it that the bridge is occupied by the mythical beings whom the Manx call "Themselves". Make sure you greet them as you pass saying "Good morning little people" or "Moghrey Mie Mooinjer Veggey" in Manx.



MANN AT Night

Dazzling night skies and the Northern Lights seen with the naked eye.

34

On a clear night, the Isle of Man sky is simply stunning, with many astronomical sights visible to the naked eye and even more can be discovered through a telescope or binoculars.

The Island is also ideally placed to see the magnificent sight of the Northern Lights on many occasions. The Northern Lights are normally only seen from northerly locations such as Alaska, Norway and Iceland, however the crystal clear northern horizon from the Island's north eastern coast means this fascinating phenomenon can often be seen. The Manx night sky is an amazing experience that will astound even the most experienced stargazer.

Home to 26 Dark Sky Discovery Sites, it has some of the darkest skies in Europe.

With the naked eye you can easily see the Orion Nebula – over 1,500 light years away, our Milky Way Galaxy, and one of the Milky Way's companion galaxies, the Great Andromeda Galaxy, whose light has been on its way to us for about 2.5 million years.



26

OFFICIALLY
RECOGNISED DARK
SKY DISCOVERY
SITES, THE LARGEST
CLUSTER IN THE
BRITISH ISLES.



Isle of Man Dark Skies Sites



HERE, THERE'S A CRISPNESS TO THE STARS THAT IS NOTICEABLE TO THE EYE. THROUGH A TELESCOPE YOU SOON APPRECIATE THE CLEAR NATURE OF THE SKIES - THERE'S A LEVEL OF CLARITY RARELY SEEN IN THE BRITISH ISLES.

BBC, SKY AT NIGHT

EXPLORE MORE ONLINE:
 visitisleofman.com 

2017 EVENTS

This is just a selection of the year-round special events taking place on the Isle of Man. There's a packed programme to suit everyone including sport, heritage, culture, heritage transport, motorsport, food and drink as well as family events.

All event details were correct at the time of print, please check with the event organiser directly before booking.

JANUARY

PEEL NEW YEAR'S DIP

01 JANUARY

peeldip.com

Blow away the Christmas cobwebs with an exhilarating Irish Sea plunge at Peel Bay

FEBRUARY

STARGAZING IN THE FOOTSTEPS OF KING ORRY

17 FEBRUARY

manxnationalheritage.im/whats-on

An evening of stargazing with Howard Parkin of Astromanx

MARCH

ISLE OF MAN DARTS FESTIVAL

9 - 12 MARCH

isleofmandartsfestival.com

The longest running and biggest festival in the British Darts Organisation's diary

APRIL

CAMRA REAL ALE OF MAN BEER FESTIVAL

6 - 8 APRIL

iombeerfestival.com

A three day festival serving over 150 beers and 30 ciders

RUSH HOUR ON THE RAILWAYS

14 - 17 APRIL

rail.im

A four day celebration of Isle of Man Railways

MANX CLASSIC CAR SPRINT AND HILLCLIMB

27 - 29 APRIL

manxmotorracing.com

Classic sports cars competing on closed roads at three venues

MAY

MANX NATIONAL RALLY

5 - 6 MAY

manxautosport.org

The Manx National Rally is a high speed closed road asphalt rally

CYCLEFEST

12 - 14 MAY

iomcyclefest.com

A celebration of cycling based at the Milntown Estate in Ramsey

JUNE

LONGEST DAY LONGEST RIDE MOUNTAIN BIKING

17 - 18 JUNE

loaghtanloaded.com

A 24 hour endurance mountain bike event held at the Conrheny Forest Plantation

JUNE CROWN GREEN BOWLS FESTIVAL

19 - 23 JUNE

visitisleofman.com

Recognised as one of Britain's best crown green bowls festivals with a prize pot of over £16,000



ISLE OF MAN WALKING FESTIVAL

28 APRIL - 1 MAY

visitisleofman.com

Walk the best of British Isles scenery packed into 221sq miles at this fully guided 4 day festival. Offering varying lengths and difficulties the walks are designed to give you a glimpse into the tranquillity and splendour of the Isle of Man, with shorter walks giving you even more opportunity to explore the Island's rich heritage at your leisure.



TT RACES AND QUALIFYING

27 MAY - 9 JUNE

iomtt.com

Experience TT adrenaline in the Road Racing Capital of the World. Your chance to see the best riders on the planet do battle on the famous TT mountain circuit. The TT Festival combines elite road racing with a festival atmosphere including air displays, fireworks, stunt shows and much much more.

JULY

SOUTHERN 100 MOTORCYCLE RACES

10 - 13 JULY

southern100.com

The stars of the world famous TT Races return to the Island for this spectacular meeting held on the 4.25 mile Billown Course

YN CHRUINNAGHT CELTIC FESTIVAL

11 - 15 JULY

ynchruinnaght.com

A lively festival of traditional Celtic music and dance

WORLD TIN BATH CHAMPIONSHIPS

15 JULY

castletown.org.im

A fun family event with thousands of spectators at Castletown Harbour

MANX HERITAGE TRANSPORT FESTIVAL

26-30 JULY

iombusandrail.info

Featuring steam, electric and mountain railways as well as vintage cars, motorbikes and buses



TYNWALD DAY & NATIONAL WEEK

5 JULY

tynwald.org

The Manx National Day is held on the fair field at St John's and celebrates the world's oldest continuous parliament at an open air ceremony on Tynwald Hill. The public has the opportunity to present petitions to the Island's lawmakers. A full day out including stalls, catering, Manx music and dance.



TOUGH MANN ADVENTURE CHALLENGE

5 AUGUST

toughmann.com

Tough Mann is a team-oriented 10k obstacle course designed to test physical strength and mental courage. You may start the event an individual, but you will finish a team player. Many of the obstacles require participants to help each other. Tough Mann experience is like no other and a day where lifelong memories are created.

MANX 100 - MOUNTAIN BIKE MARATHON CHAMPIONSHIP

30 JULY

manxmtb.com

Riders will experience challenging mountains, hills, moors and valleys all with stunning views out to sea

AUGUST

ISLAND AT WAR ON THE STEAM RAILWAY

18 - 20 AUGUST

rail.im

The Isle of Man will be plunged into the 1940s with the popular Island At War event on the Steam Railway

ISLE OF MAN FESTIVAL OF MOTORCYCLING

19 AUGUST - 3 SEPTEMBER

iomfom.com

The Isle of Man Festival of Motorcycling brings together five of the biggest and best events in the motorcycle calendar

SEPTEMBER

SEPTEMBER CROWN GREEN BOWLS FESTIVAL

4 - 8 SEPTEMBER

visitisleofman.com

Recognised as one of Britain's best crown green bowls festivals with a prize pot of over £16,000

END TO END MOUNTAIN BIKE CHALLENGE

10 SEPTEMBER

manxe2e.org

One of Europe's largest mountain bike events covering 75km and 1500m of climbing

RALLY ISLE OF MAN

14 - 16 SEPTEMBER

rallyisleofman.co.im

The final round of the British Rally Championship - 20 stages covering 163 miles across 3 days

ISLE OF MAN ORIENTEERING CHAMPIONSHIPS

16 SEPTEMBER

adventurousexperiences.com

Embrace the freedom of adventure racing, the excitement, the minimum of rules and maximum fun!

ISLE OF MAN FOOD AND DRINK FESTIVAL

16 - 17 SEPTEMBER

gov.im

Try everything from creamy Manx cheeses, fresh seafood, Manx meat and locally brewed Manx ales

ISLE OF MAN HERITAGE OPEN DAYS

29 SEPTEMBER - 1 OCTOBER

manxnationalheritage.im

Feed your curiosity by exploring some of the unusual and less publicly accessible historic properties, land and buildings

OCTOBER

ISLE OF MAN HERITAGE OPEN DAYS

6 - 8 OCTOBER

manxnationalheritage.im

Feed your curiosity by exploring some of the unusual and less publicly accessible historic properties, land and buildings



ISLE OF MAN FESTIVAL OF CHOIRS

20 - 22 OCTOBER

festivalofchoirs.im

A celebration of choral singing in a competitive but friendly festival with choirs from the UK and Ireland

TRADITIONAL HOP TU NAA AT CREGNEASH

27 OCTOBER - 3 NOVEMBER

manxnationalheritage.im

Join in at the unique Manx Celtic Festival of Hop tu Naa with a mix of evening and family activities

NOVEMBER

PORT ERIN FIREWORKS DISPLAY

5 NOVEMBER

porterin.gov.im

A firework spectacular lighting up Port Erin Bay's night sky

DECEMBER

SANTA ON THE STEAM TRAIN

9 - 10 AND 16 - 17 DECEMBER

rail.im

For the perfect Christmas treat, ride the Santa Trains and visit Santa's Grotto



MANX TELECOM

manxtelecom.com

Manx Telecom is the Isle of Man's leading communications provider offering a wide range of fixed line, broadband, mobile, and data centre services.



ITINERARIES

Measuring only 33 miles in length and 13 miles in width, you'll be surprised at how much amazing diversity the Island has to offer. Due to the influence of the sea, the weather is temperate making it an ideal year-round visitor destination, so no matter what time of year you're planning to visit, you can enjoy the many beaches, glens, forests and serene sights.



SPRING

38

As spring arrives there is no better time to escape the everyday routine and find adventure on the picturesque coastline, along the rugged peaks and all the way up to the top of Snaefell.

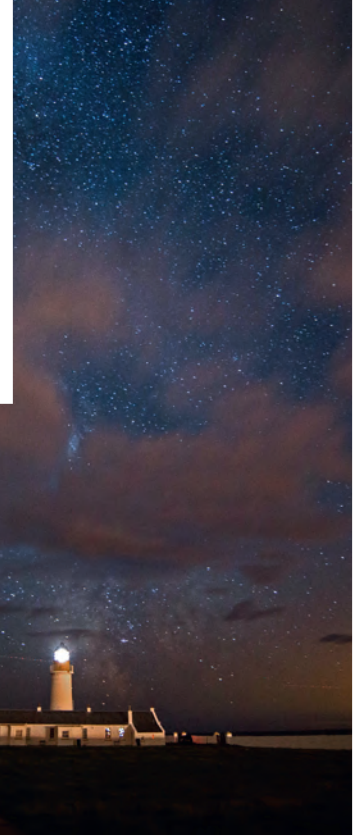
- Breathe in the invigorating sea air as you paddle a sea kayak alongside the imposing rocky cliffs, looking out for sea birds and basking sharks feeding en route!
- Hear the calling signs of nature as seals and sea birds swim and soar around The Sound and Calf of Man, in the idyllic South of the Island.
- Experience scenic country roads from Ramsey in the North down to Port Erin in the South. Cycle along the coastal roads or choose to cruise the historic TT Mountain Circuit.
- Take in spectacular sea views as you walk sections of the Raad ny Foillan, or 'the Way of the Gull', the 95 mile coastal path which encircles the whole Island in one continuous loop. Stride along pathways bordered by the vivid purple heather down to the dramatic Chasms, deep fissures that drop away to the sea, follow the path and descend into the delightful Port St Mary.
- Linger over a coffee or add a little sparkle with the special 'Fizz & Chips' by the seaside at Little Fish Café, North Quay before climbing Douglas Head to find the 'marine scene' viewing point on Marine Drive.

SUMMER

There are many opportunities for everyone to enjoy the outdoors during a summer visit as the Isle of Man boasts outstanding open spaces.

- Explore some of the many beaches including Port Erin's wide stretch of sand in the South and Garwick beach in the East where you can feel at one with nature enjoying rope swings, dam building and rock pooling.
- Find your sense of adventure at Mooragh Park, Onchan Pleasure Park and Silverdale. With children's playgrounds, boating lakes, BMX tracks and crazy golf, each location has something special to offer.
- Set in 92 acres of glorious Manx countryside, a visit to the Home of Rest for Old Horses will give you the opportunity to find out what happens to the Douglas tram horses when they retire.
- Experience an array of different senses from the hot coal and cinder aroma of the steam train passing through the charming countryside. Feel the breeze on the Manx Electric Railway from the capital to the highest peak at Snaefell and hear the sound of the clipperty clop on-board the world's oldest horse drawn tramway in Douglas.
- Discover the striking ruins of Peel Castle, which overlooks one of the Island's best loved bays, then create your own castle on the large sandy beach and reward yourself with a delicious Manx dairy ice cream.
- Watch the night sky unfold at one of the 26 British Isles Dark Sky Discovery Sites. On a clear summer's night, you'll be able to see the Milky Way and if you're lucky the Northern Lights!



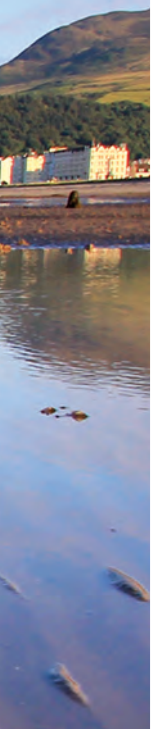


AUTUMN

In autumn there is no better time to learn more about the Island's rich and fascinating history.

- Head from the Great Laxey Wheel, to a living, working crofting community at Cregneash and be enthralled by the unique heritage sites to be explored.
- Discover ancient castles, such as the magnificent medieval fortress, Castle Rushen, along with the Nautical Museum in Castletown. Delve deeper into vibrant history at the Manx Museum in Douglas, filled with hoards of Viking treasure, interactive displays and fascinating artefacts.
- Hike the Millennium Way, running from Sky Hill and Ramsey Bay in the North to Castletown in the South, the route takes you down the spine of the Island passing impressive inland scenery along the way. Sturdy boots, a map and a compass are a must! You'll be rewarded along the route with views of hidden valleys, open moorland and trickling streams.
- Catch a show at the Gaiety Theatre, steeped in history and tradition. The Gaiety is one of the finest remaining examples of work from the legendary theatre architect, Frank Matcham.

- Get up close and personal with a variety of animals at Curraghs Wildlife Park and take a trip to Knockaloe Beg Farm, where you'll be able to see cows being milked, collect eggs from the free range chickens and take a trailer ride through the idyllic countryside.



WINTER

Spoil yourself with spectacular and breathtaking views while sampling the local produce. Winter in the Isle of Man is a feast for the eyes and belly.

- Go behind the scenes and see first-hand how the Island's fantastic food and drink is produced. Take a guided tour of Smeale Farm and explore Manx agricultural architecture through the centuries. Visit Moore's, a working factory that has been curing Manx kippers for over 100 years. For a sweet kick, the Original Manx Fudge Factory in Ballasalla makes fudge, toffee and chocolates using as many local ingredients as possible. Wash it all down with a beer on an Okell's Brewery Tour, packed with information on how the brews are made, ending up in the Okell's in-house bar where you can sample the produce.
- Spot the many birds that visit the Isle of Man during the winter and migration seasons, including waders such as the purple sandpiper, turnstone and golden plover.
- Taste the decadent delights of afternoon tea served with a glamorous sense of tradition and occasion at Aaron House, sit back and sip while you soak up the beautiful panoramic views of Port St Mary Bay.
- Enjoy the ultimate entertainment experience at the Villa Marina with the Royal Hall at its centrepiece, its spectacular auditorium combines Edwardian grandeur and comfort, all with the latest sound and light systems that create an amazing atmosphere at every show.

All venue opening details were correct at the time of print, please check online for further information and for opening times at: visitisleofman.com



BROADEN YOUR *horizons*

With the surge in staycations the Island is the perfect place to holiday this year. Choose between the Manx or British Pound so there's no requirement to pay an exchange rate, allowing you to do more and make your money go further.

40

You'll know you've arrived in Douglas, the Island's capital as soon as you see the picture postcard Victorian seafront and promenade, with the aptly named 'Tower of Refuge' standing majestically in Douglas Bay that also serves as a welcoming landmark.

Step off the ferry and you're right at the heart of it – if you're travelling on foot you'll find that Douglas is the perfect starting point for your Isle of Man adventure, with taxi ranks and bus stations just outside the Sea Terminal.

If you choose to fly, you'll soar over the rugged and exposed coastline landing at Ronaldsway Airport in the South of the Island. Passing through the airport is a breeze and there's regular bus services between Douglas and Port Erin or Peel and Castletown, that run every 20 minutes to Port Erin or Douglas during the day, every 30 minutes off peak, seven days a week.



**ONE OF THE BEST SIGHTS IN THE WORLD IS WHEN YOU'RE FLYING IN TO THE ISLE OF MAN...
...DROP IN TO RONALDSWAY AIRPORT AND YOU SEE SPECTACULAR LITTLE TOWNS, BIG MOUNTAINS AND COASTLINE. IT'S REALLY SOMETHING THAT MAKES ME PROUD TO BE FROM WHERE I'M LANDING.**

**MARK CAVENDISH, MBE,
PROFESSIONAL ROAD RACING CYCLIST**

BY PLANE:

With over 12 UK and Irish airports flying direct to the Isle of Man, travelling by air is easy. As soon as you take off you'll be cruising over our cliff-fringed coastline in no time at all, and with the hassle free experience when you arrive, you'll have more time to enjoy your holiday.

Please check with individual flight operators for timetables, fares and bookings or contact the Isle of Man Airport with any enquiries.

AER LINGUS REGIONAL

Routes: Dublin
aerlingus.com
08717185000 (UK)
+353 0 818 365000 (Ireland)
+353 1 886 8505 (Rest of World)

BRITISH AIRWAYS

Routes: London City
ba.com
0844 493 0787

EASYJET

Routes: Bristol, Liverpool, London Gatwick
easyjet.com
0843 104 5000

FLYBE

Routes: Birmingham, Liverpool, Manchester
flybe.com
0871 700 2000 (Reservations)
0871 700 2223 (Group reservations)
08715226153 (Business Express)

CITYWING

Routes: Belfast City, Blackpool, Glasgow, Gloucester (M5), Newcastle
citywing.com
0871 200 0440

ISLE OF MAN AIRPORT ENQUIRIES

iom-airport.com
01624 821 600

BY FERRY:

Take a fastcraft or ferry from a choice of four ports. Once on board you can shop, dine or pass the time enjoying a film in the cinema.

Please check with the Isle of Man Steam Packet for timetables, fares and bookings.

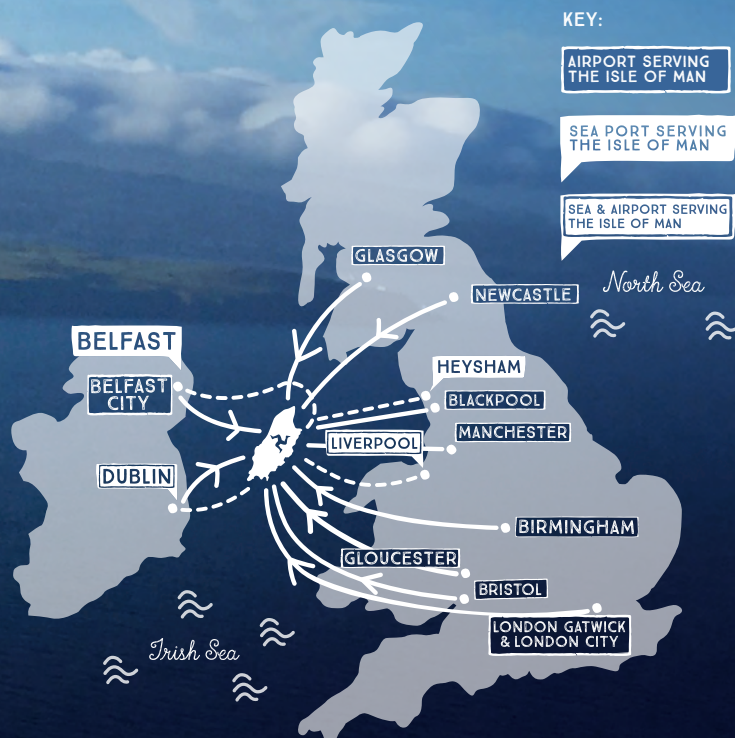
ISLE OF MAN STEAM PACKET COMPANY (AS FEATURED ON PAGE 2)

steam-packet.com
+44 (0) 1624 661661 (Isle of Man)
08722 992 992* (UK)
00 44 8722 992 992* (Republic of Ireland and Outside UK)

GETTING AROUND...

Whether you choose to hire a car, take a taxi, travel on the extensive bus network – Bus Vannin – or step back in time and hop aboard the Victorian rail networks – the Manx Electric Railway, Isle of Man Steam Railway and Snaefell Mountain Railway – you'll find getting around the Island easy and most importantly cost effective.

For ease and convenience why not hail a taxi? Taxi ranks can be found directly outside the entrance of the airport buildings. Taxis are available to meet flights and sailings and most destinations are covered by fixed tariff charges. Alternatively you can telephone for a taxi with many firms operating a 24 hour all Island service.



*Calls to this number are charged at 10 pence per minute including VAT from a BT landline, calls from other networks and mobile operators may vary.



A day, a week,
a month or more...



...hire your class of car in
moments at Mylchreests.

Runabout, Mid-Size or MPV, we have the car you need ready to go with minimal formalities – when and wherever you are on the Island. Pick up from Ronaldsway Airport, Douglas Sea Terminal or have it delivered to your home, hotel or business.

You can be sure the rate you pay is genuinely competitive.

We constantly price-check the competition and we have cost effective price plans for longer term hire.



We are proud to represent



FREE PHONE 08000 190335
WWW.MYLCHREESTS.COM

42

OCEAN

Ocean Motor Village
IOM Business Park, Douglas, IM2 4WD
For all your **Car & Van** Rental needs
Tel: **01624 820830 / 664444**



Book online at:
www.oceanford.com www.4hire.co.im



ONE *Time* STAY

INTRODUCTION TO ACCOMMODATION

For some, the Isle of Man conjures up the happy memories of a childhood holiday, for others it's the unrivalled adventures and new experiences. For most, it's a passionate affair that lasts a lifetime with generations of families.



There's so much that will surprise you about this treasured jewel of the Irish Sea, combining the best of Britain and Ireland, with unspoilt coastline, epic landscapes, fascinating heritage and warm hospitality, you'll be brimming with excitement as you arrive.

From a night under the stars to a week in five star luxury, wherever you choose to rest your head you'll find accommodation that suits.

EXPLORE MORE ONLINE:
 visitisleofman.com 

43

EXTRA SENSORY



ALWAYS STAY IN A HOTEL?

Why not stay somewhere a bit different? With yurts, glamping pods, lighthouse cottages or your own private Island hostel on the Calf of Man, there are a number of different accommodation options on the Island
visitisleofman.com/accommodation

Map of the ISLE OF MAN



CHOOSE YOUR PERFECT ACCOMMODATION

SELECTING YOUR ACCOMMODATION

Whether you're looking for a cosy B&B, a quality hotel or an attractive self catering cottage or apartment, the Isle of Man offers you a great variety of places to stay.

All visitor accommodation is subject to compulsory annual registration and independent inspection. So you can rest assured that any accommodation you choose from the pages of this guide has been duly inspected and rated as indicated. The independent grading awarded to all accommodation is assessed under the same criteria as the UK. Look out for the grading signs!

WELCOME SCHEMES



Walker friendly accommodation will provide you with somewhere warm to dry your wet clothing and muddy boots overnight. There will be a supply of maps and guide books about local walks and public transport information that will help you get to and from the start/finish points of your chosen routes. A daily local weather forecast will be provided together with local attractions and events that may be of interest to you when you are taking a break from walking.



Biker friendly accommodation will provide you with a secure storage area, facilities and equipment for washing your bike, plus handy little extras like visor and boot cleaning equipment and de-grease hand wash. Your host will provide maps, guide books, and information on bike repair shops and petrol station locations. The local weather forecast will be provided daily.



Stargazers Welcome - Accommodation that is part of the Stargazers Welcome Scheme, offers a range of additional facilities and services. You can take advantage of useful items such as binoculars, a torch, portable folding chairs or waterproof picnic blankets which are available on request to take out on your stargazing adventures. In addition, you'll find maps, guide books, details of dark sky sites and information on public transport to and from the sites closest to your chosen accommodation.



Cyclist friendly accommodation will provide you with a secure storage area, somewhere warm to dry wet clothing overnight, facilities and equipment for washing your bike, handy little extras like puncture repair kits and first aid kits. Your host will provide maps, guide books and information on your chosen routes. A daily local weather forecast will be provided together with details of local attractions and events that may be of interest to you when you are taking a break from cycling.



Dog friendly accommodation will provide you with everything your dog needs, such as water and feeding bowls, pet washing facilities and a feeding mat- plus little extras like toys, treats and bedding. Your host will provide information about local dog-friendly walks, attractions and any restrictions together with details of local vets, pet shops and pet food suppliers.

You can also search for accommodation via an accommodation search or by browsing a list of providers of each welcome scheme at visitisleofman.com/accommodation

KEY TO ACCOMMODATION ADVERTS



Breakfast Awards

This award recognises those hotels and B&Bs where the owners, managers, chefs and staff go the extra mile to ensure the breakfast will exceed expectations.



Stay on a Farm

This logo identifies establishments that are members of the Isle of Man Stay on a Farm network who have grouped together to share their way of life with you, by offering superb holiday accommodation and supervised access to their farms.



Grading

This covers both serviced and self catering establishments. Campsites and hostel accommodation are rated as accredited and highly accredited.



Gold and Silver Awards

For hotels, guest accommodation and self catering, silver awards recognise exceptional quality at all levels and gold awards are given to the best of the best.



Grid reference

The grid reference code on each listing correlates with where the property can be found on the map.

45

NATIONAL ACCESSIBLE SCHEME (NAS)

National Accessible Scheme (NAS)

This scheme rates the accessibility of visitor accommodation and helps accommodation operators improve and promote their true level of accessibility.



M1 (One step ahead) - Older and less mobile guests



M2 - Part-time wheelchair users



M3i - Independent wheelchair users



M3a - Assisted wheelchair users



M3ie - Access Exceptional

EXPLORE MORE ONLINE:
visitisleofman.com

premierholidays

the Isle of Man holiday specialist

take the stress out of booking your holiday, book today



4★ Best Western Palace
3nts with breakfast*

from **£229** by sea
from £259 by air
Travel up to 17 May 17



4★ Claremont
3nts with breakfast*

from **£235** by sea
from £265 by air
Travel Jul & Aug 17



3★ Empress
7nts with breakfast

from **£469** by sea
from £499 by air
Travel Jul & Aug 17



4★ Mannin
5nts with breakfast

from **£409** by sea
from £439 by air
Travel May-Sep 17



4★ Sefton
3nts with breakfast

from **£319** by sea
from £349 by air
Travel Oct 17



3★ Groudle Glen
7nts Self Catering**

from **£315** by sea
from £339 by air
Travel Jul & Aug 17



3★ Caledonia Guest House
5nts with breakfast

from **£245** by sea
from £275 by air
Travel Apr 17



3★ Welbeck
4nts with breakfast

from **£255** by sea
from £285 by air
Travel Sep 17

Many more offers available

This is just a selection of the extensive accommodation range available - from great guesthouses to self-catering to luxury hotels.

Please do ask for prices.



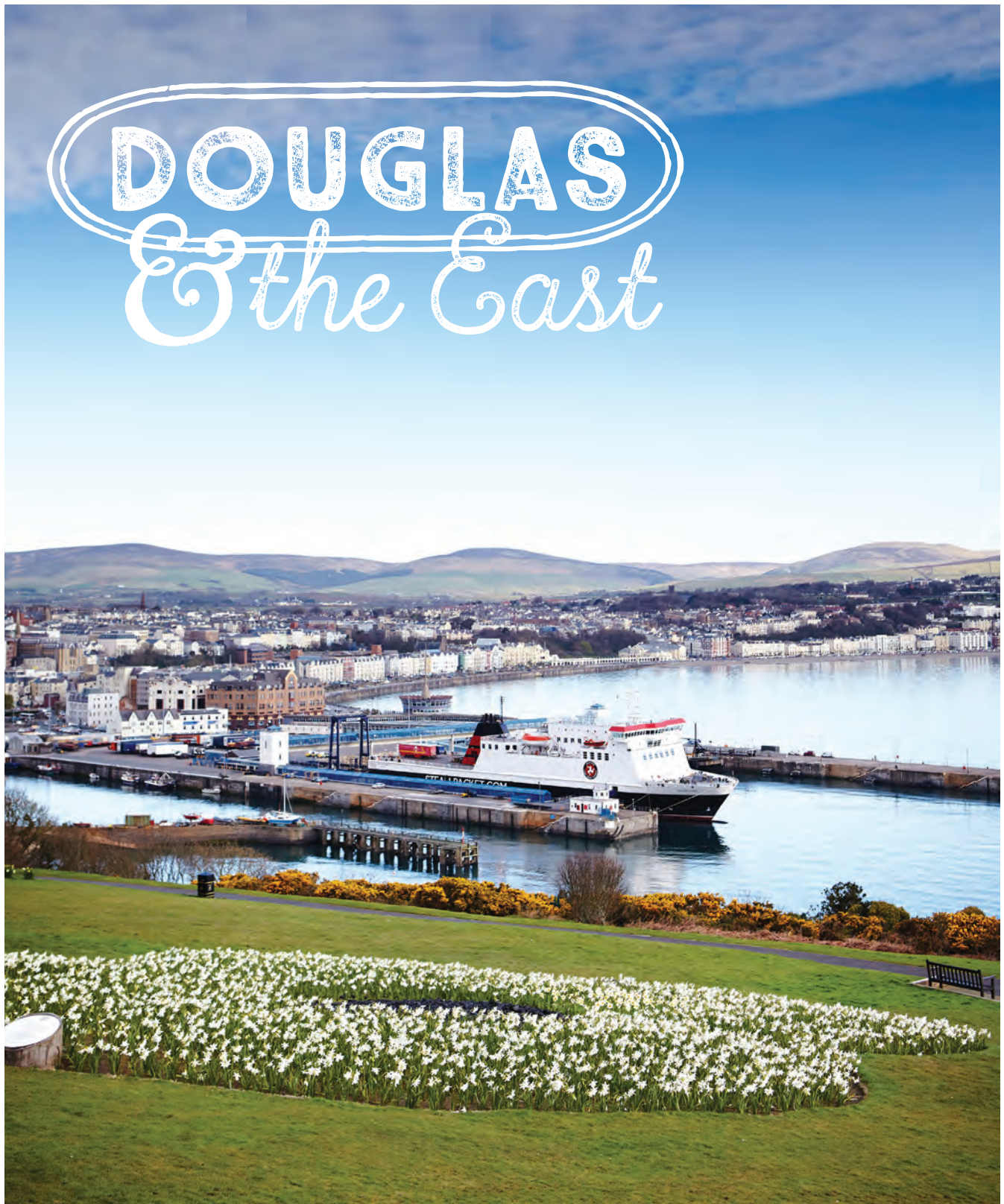
www.premierholidays.co.uk/isleofman

08444 937 548

Price Promise

We are so confident that our prices are the best that we will match any like for like quote.

From prices are per person based on 2 adults sharing and include ferry travel from Liverpool or flights from Bristol, Gatwick or Liverpool. Other regional departures available. Prices shown are subject to availability. *Friday arrivals only. **Based on 4 passengers. Terms and conditions apply.



DOUGLAS AND THE EAST

PEEL AND THE WEST

PORT ERIN AND THE SOUTH

RAMSEY AND THE NORTH

CAMPING AND HOSTELS



SEE...

...a 360 degree view of Douglas from inside the Great Union Camera Obscura.



HEAR...

...sounds of a bygone era as you're carried along a Victorian promenade on the world's oldest horse drawn tramway.



SMELL...

...fresh bread being baked using flour from Laxey Flour Mill.



TASTE...

...some of the Island's real ales and craft beers on offer in the local hosteleries or breweries.



TOUCH...

...cascading crystal waters from the majestic Dhoon Glen Waterfall.

SEFTON GROUP

BEST WESTERN PALACE HOTEL AND CASINO ★★☆☆

CENTRAL PROMENADE, DOUGLAS, IM2 4NA



If you're looking for a contemporary hotel which really does have all of the leisure and entertainment facilities you could possibly wish for under one roof, then look no further than The Best Western Palace Hotel & Casino. Douglas town centre is a ten-minute walk away, with a bus stop outside. The complex has a lively atmosphere during weekends.

- 135 en-suite rooms, many with sea views
- Paragon restaurant, offering carvery style dining and panoramic views over Douglas Bay and beyond
- Paragon Bar, offering drinks, a Light Bite food menu and afternoon tea daily
- Free £5 Casino chip for all guests (aged 18 and over)
- 'Majestic at the Casino' Chinese restaurant
- Health Club, including heated swimming pool and Jacuzzi, sauna, cardio gym and weights gym
- Two-screen cinema on-site
- Conference facilities
- Free Wifi
- On-site parking

T: 01624 662662

E: info@palacehotel.co.im W: palacehotel.co.im



From £72 per room per night



18

SEFTON HOTEL ★★☆☆

HARRIS PROMENADE, DOUGLAS, IM1 2RW



The beautiful Victorian 4-star Sefton Hotel is centrally located on Douglas Promenade minutes from the shopping and business districts, and offers a relaxing, tranquil atmosphere.

- 101 en-suite rooms, many with sea views
- Unique indoor Atrium Water Garden
- Sir Norman's bar, offering a gastropub menu, Sunday roasts and an extensive drinks menu, with major sports screened live
- Disabled access and facilities
- Free Wifi
- 'Harbour Lights at the Sefton' restaurant offering breakfast, brunch, gourmet lunches, afternoon tea, gin-tasting afternoon tea and dinner
- Swimming pool and express gym
- Business and Conference facilities
- Lift

T: 01624 645500

E: info@seftonhotel.co.im W: seftonhotel.co.im



From £81 per room per night



17

SEFTON EXPRESS ★★☆☆

RONALDSWAY, BALLASALLA, IM9 2SE

Situated just a few minutes' walk from the Isle of Man Airport, the Sefton Express is the perfect base for exploring the South of the Island, or for travellers looking for convenience and exceptional quality.

- 33 en-suite rooms
- Conference facilities
- On-site parking
- Flat-screen TVs
- Continental breakfast and evening food menu available
- Family rooms, Executive Room and Disabled-access rooms available
- On-site bar
- Lift
- Wifi available (small charge applies)

T: 01624 824321 E: info@seftonexpress.co.im

W: seftonexpress.co.im



From £49 per room per night



15

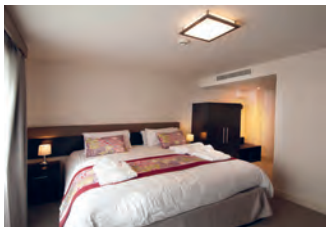


SEFTON GROUP

MANNIN HOTEL



8-16 BROADWAY, DOUGLAS, ISLE OF MAN, IM24EL



The New Mannin Hotel opened its doors in April 2016. We set new standards in accommodation for visitors, whether on holiday or business. All of our 54 bedrooms have air conditioning, complimentary wifi, laptop safe, tea & coffee making facilities etc. Our restaurant serves homemade food and fine wines 7 days a week, soft seating lobby area is ideal to just relax with a drink or meet friends and colleagues for coffee.

T: 01624 602555

E: info@manninhotel.im W: manninhotel.im

From **£85** per room per night

17

SLEEP WELL & EAT WELL ON THE ISLE OF MAN

Our hotels, The Claremont, The Chesterhouse and The Rutland are all situated on the seafront in Douglas and offer an excellent choice between luxury, modern simplicity and great value.



CALL 01624 617 068 OR VISIT OUR WEBSITE
WWW.SLEEPWELLHOTELS.COM

SLEEPWELL
HOTELS

Rest assured....

A SENSE OF TASTE

Taste Isle of Man is an independently assessed quality assurance scheme designed to help you make an informed choice about where to eat and drink during your visit to the Island. Find out more at visitisleofman.com/taste

ADMIRAL HOUSE



The best located metro hotel in Douglas. Just a few minutes walk from the sea terminal and fantastic local restaurants.

T: 01624 629551 E: enquiries@admiralhouse.com

W: admiralhouse.com



From **£60-£120** per night

J7

DOUGLAS & THE EAST

The Ascot Hotel



£75 - £110 per night



Arrive



Dine



Nightcap



Goodnight

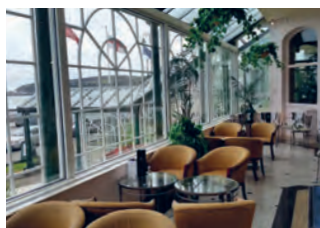
*We deliver what other
Hotels can only Promise.*

Tel: 01624 675081 Email: info@ascototel.im Website: ascototel.im
The Ascot Hotel, Empire Terrace, Douglas, Isle Of Man, IM2 4LE

THE EMPRESS HOTEL



CENTRAL PROMENADE, DOUGLAS, IM2 4RA



Centrally located, a short distance from the shopping and financial centres, with a welcoming atmosphere. Many rooms offer Sea views and these now include large LED televisions with the full Sky Sport and Entertainment package, plus all rooms offer free WiFi and refreshments. Leisure facilities include a small mini gym, and a sauna and steam room.

- Two Restaurants - The Brasserie & Manx Gourmet Burger & Grill
- Live Pianist in the Piano Bar up to four evenings a week
- Sky & BT Sports shown in the Piano Bar Lounge daily
- Bar Meals served from 11am to 9.30pm daily all year

T: 01624 661155

E: reservations@theempresshotel.net W: theempresshotel.net

From **£59-£130** per night per room B&B

17

DOUGLAS AND THE EAST

PEEL AND THE WEST

PORT ERIN AND THE SOUTH

RAMSEY AND THE NORTH

CAMPING AND HOSTELS

CRAG LEA BED & BREAKFAST

★★★★★

A luxury Edwardian house set in a tranquil location, overlooking Laxey Bay.

T: 01624 860339 E: craglea@manx.net
W: craglea.co.uk



From £70-£85 per room per night

H9



KINGS GUEST HOUSE

★★★★★

QUEENS PROMENADE, DOUGLAS, IM2 4NL

Sea views, set in gardens to front and back on the Queens Promenade, Douglas. Rooms en suite, furnished to a high standard. Tea and coffee, broadband, digital television. Private garage or 24 hours parking outside.

T: 01624 620829
E: bookings@kings.im
W: kings.im

From £35 per person per night

I7



HOTEL ACCOMMODATION

THE DEVONIAN

★★★

BROADWAY, DOUGLAS, IM2 4EN

Beautifully updated 3 star, silver award accommodation. Centrally located, overlooking the Villa Marina gardens.

- Personally run by the proprietors
- Extensive breakfast menu
- Free WiFi in all rooms

T: 01624 674676
E: devonian@manx.net
W: thedevonian.co.uk

From £30 per night

I7



SEAVIEW GUEST HOUSE

★★★

12/13/15 EMPRESS DRIVE, DOUGLAS, IM2 4LQ



A warm, friendly welcome awaits you at the Seaview. Our aim is to give you our personal attention to ensure an enjoyable holiday.

Facilities include:

- All rooms en-suite
- Tea/coffee making facilities
- TV, alarm clocks
- Laundry, irons available
- Free WiFi
- Residents Bar
- Minutes from shopping and finance centres
- Extensive breakfast menu
- Short breaks offered
- Midweek bookings accepted
- Non-smoking
- Accept major credit cards

T: 01624 674090
E: enquiries@seaview.co.im W: seaview.co.im



From £35 per night

I8

AT CALEDONIA

★★★

17 QUEEN'S PROMENADE, PALACE TERRACE, DOUGLAS, IM2 4NE

The Caledonia is steeped in Victorian heritage, with fully modernised facilities. Superbly situated by the beach. Close to all amenities.

- Full English breakfast
- All rooms ensuite with central heating
- Licenced bar and Chinese restaurant with full à la carte menu

T: 01624 624569 F: 01624 614593
E: atcaledonia@gmail.com
W: caledonia.im



From £30 per night

I8



ST. HELIERS GUEST HOUSE

★★★

CENTRAL PROMENADE, DOUGLAS, IM2 4LU

The perfect place to stay. A relaxed holiday in a small, friendly Guest House facing the beach.

- Lift to all floors
- Dinner on request
- Residents' bar
- En-suite rooms available
- Television in all rooms
- Family run

T: 01624 624355
E: stheliers@manx.net
W: stheliers.im

From £26 per person per night

I7



ARRANDALE HOUSE

★★★

39 HUTCHINSON SQUARE, DOUGLAS, IM2 4HW

Discover 'The Friendliest Place in Town'*. The popular family run Arrandale is situated on a quiet central Douglas garden square, close to Promenade and all amenities.

- Free WiFi
- Free Breakfast
- Seaview and Family Rooms available
- Residents' Bar and Restaurant
- Sea/Air travel arranged
- * According to 200+ guest reviews

T: 01624 674 907 E: arrandale@manx.net
W: arrandale.com

From £30 per night

I7



ELLAN VANNIN GUEST HOUSE

★★★★

31 LOCH PROMENADE, DOUGLAS, IM1 2LY

The Ellan Vannin is a beautiful, Victorian town house located on the magnificent sea front of Douglas.

Enjoy the 4- star silver accommodation gazing out across the Irish Sea, and yet turn around to find yourself still in the heart of Douglas town centre. Only here will you find our professional, family team, spanning 2 generations, dedicated to welcoming you and making your stay extraordinary.

- 29 luxuriously appointed bedrooms
- Contemporary ensuite bathrooms with full size toiletries from Taylors of London
- Free Ultrafast WiFi to keep you connected - in all areas and for all your devices
- Award winning, authentic Manx breakfast including homemade Jam and Marmalade and freshly baked Manx Bonnag
- On site, secure garage with jetwash facilities for biking enthusiasts
- Cosy licensed bar with a selection of fine single malt whiskies
- Complimentary homemade cakes and fresh milk daily

T: 01624 674824 E: info@ellanvanninhotel.im

W: ellanvanninhotel.im



From £27- £75 per night

J7



GUEST HOUSE ACCOMMODATION

SILVERCRAIGS

★★★★

27 PALACE TERRACE, QUEENS PROMENADE, DOUGLAS, IM2 4NF

- Tripadvisor excellence
- Prime location near Palace Hotel
- Amongst Douglas promenade's best value
- Lift to all floors, free wifi
- Rooms all en-suite & clean
- Luxury memory foam mattresses
- 100% guest satisfaction policy from arrival

T: 01624 677776

E: silvercraigs@gmail.com

W: silvercraigshotel.com



From £24 per person per night

I8



PLEASINGTON SUITES

★★★★

One and two bedrooms suites, all with a private lounge.

T: 01624 676551 E: jackydixon@manx.net

W: pleasington.vpweb.co.uk

From £35-£45 per night

I7



THE BLOSSOMS

★★★★

The Blossoms is a quiet family run guest house, in the centre of Douglas promenade, with beautiful sea views.

T: 01624 673360 E: mrsblossoms@outlook.com

From £27-£35 per night

I7



SHORE HOTEL BREW PUB (INN)

★★★★★

Spacious double en-suite rooms with dining area, lounge, mini bar, flat screen tv and free wi-fi.

T: 01624 861509 E: shore@manx.net



From £50 per room per night

Sleeps upto 4 H4



ALL SEASONS

★★★★

11 Clifton Terrace, Broadway, Douglas, IM2 3HX

T: 01624 676323 E: bookings@hotels-iom.com

W: hotels-iom.com

From £32 per person, per night

I7



THE ISLAND & FAIRFIELD GUEST HOUSE

★★★★

Central promenade location. Family run guesthouse. Residents bar, free WiFi available in all rooms, unrestricted street parking, great beds & a hearty breakfast included.

T: 01624 673418 E: mail@iomguesthouse.com

W: iomguesthouse.com

From £32.50-£37.50 per night

I7



WICKLOW HILLS

★★★★

Relaxed and friendly atmosphere. Situated on a quiet garden square, minutes from seafont. Most rooms en-suite, standard singles available. Breakfasts cooked to order. Free Wi-Fi. Flexible check-in. Use of nearby hotel bar and restaurant.

T: 01624 620453 E: wicklowhills@manx.net

W: wicklowhills.com

From £27 per person per night

G3



OLD LONAN CHURCH FARM COTTAGES



★★★★★

BALLAKILLEY FARM, BALLAMENAGH ROAD, BALDRINE, IM4 6AH

Self-catering accommodation with a hint of luxury. Five self-catering cottages set in over 200 acres of Manx countryside.



T: 01624 614441
E: sue@manxcottages.com
W: manxcottages.com

From £300-695 per week Sleeps up to 4 **H9**



COLOONEYS FARM COTTAGES

★★★★★

Three Luxury Holiday Cottages built in the shell of an old stone barn. First floor living room & kitchen. Ground floor two bedrooms and bathroom towels and linen provided. No Dogs.

T: 01624 611898 E: info@colooneys.com
W: colooneys.com

From £350-£650 per week Sleeps up to 4 **J6**



BISHOP'S LODGE

★★★★★

Comfortable, private and tranquil accommodation, ideal for couples. Easy access to Douglas centre, amenities, attractions and transport links.

T: 07624 439970 / 01624 671094
E: thebishopsloodge@gmail.com

From £59-£64 per night Sleeps up to 2 **J7**



HQ BAR & RESTAURANT



★★★★★

1 EMPIRE TERRACE, DOUGLAS, IM2 4LE



Experience our Luxury Four Star Guest Accommodation

- Complimentary use of nearby Gym & Swimming Pool Facilities
- Dine in our highly commended Restaurant
- Selection of rooms accessed by Lift
- Two Rooms adapted for Guests with disabilities or limited mobility
- Wi-Fi Internet Access
- Popular Bar boasting Sun Terrace and Sea Views
- Executive & Sea-view rooms available
- Friendly staff creating a warm welcoming atmosphere and personable service
- 38 Ensuite Bedrooms and 1 Self Catering Apartment

T: 01624 676355 E: hq@hqbar.im W: hqbar.im

From £40 per person per night **I7**

PINFOLD HOLIDAY COTTAGES

★★★★★

PINFOLD HILL, LAXEY, IM4 7HN

Super one bedroomed cottages, main road, Laxey on main bus and tram stops, lovely sea views, 3 restaurants and 4 pubs within walking distance, central for good access Island wide, interesting river and on-site water wheel. Free WiFi. Free Welcome Pack.

*PLUS - Just two miles from Laxey Wheel (see image)

T: 07624 495931
E: paulleughan@manx.net
W: pinfoldholidaycottage.com



From £300 per week Sleeps up to 2 **H9**

COTTERDALE APARTMENT

★★★★★

Luxury self-catering apartment bursting with character and charm. A perfect holiday bolthole for two.

T: 01624 624154 E: info@cotterdaleapartment.com
W: cotterdaleapartment.com



From £455-£539 per week Sleeps up to 2 **I8**



CUNARD APARTMENTS

★★★★★

Our apartments offer extremely comfortable accommodation with spacious areas for relaxation suitable for either your family or business requirements.

T: 01624 676728 E: info@cunard-accom.com
W: cunard-accom.com

From £66.50 per night Sleeps up to 7 **J7**



KIWI HOLIDAY LODGE

★★★★★

Set in the beautiful Manx countryside. 15 mins from Douglas, 4 miles from the famous TT course. Panoramic views of Electric Railway, bus stop & local pub within walking distance.

T: 01624 623534 / 07624 492174 E: carolbeattie22@yahoo.com
W: kiwiholidaylodge.co.uk

From £350-£600 per week Sleeps up to 4 **H9**



RAMILLIES GARDEN APARTMENT

★★★★★

Beautiful gardens, scenic location. Douglas only 15 mins away. Fully equipped to high standard. Central heating, free WiFi, private parking. Rates inclusive.

T: 01624 861685 E: ramillies@manx.net
W: ramillies.co.uk

From £210-£335 per week Sleeps up to 2 **H9**



Go faster with 4G...



PayGo
fantastic service coverage & speeds

call 624 624 see in-store
visit manxtelecom.com/paygo

manx telecom

SALMON RIVER APARTMENTS

★★★★

Nestled in the idyllic Laxey Valley, these stunning riverside apartments cater for parties of 4, 6 and 10. Garden with outside storage and drying room.

T: 07624 430555 E: claire@salmonriver.im

W: salmonriver.im



*National Accessible Scheme ratings apply to 'The Stables' only.



From £875 per week

Sleeps up to 10 **G9**

THE BYRE AT BALLAVALLE BARN

★★★★

The Byre is a luxury one bedroom cottage set in the idyllic Santon valley. An ideal base for your Island adventure.

T: 01624 823375 E: L.wood@mcb.net

W: thebyre.im



From £675 per week

K5

THE OLD STABLE (ONCHAN)

★★★★

Charming cottage in great village location. Shops, pubs and buses close by. Garden, parking, Sky TV, WIFI and complimentary hamper.

T: 01624 627892 E: karenclague@manx.net

W: theoldstable.com



From £315-£850 per week

Sleeps up to 4 **I8**

YARARI APARTMENT

★★★★

Stunning views of Douglas Bay. Modern, beach chic style 1/2 bedroomed apartment. All rooms oversized, jacuzzi bath with a view.

T: 07624 496363

E: kathryn_hodgson@yahoo.co.uk



From £100-£200 per night

G3

GLEN DHOO COUNTRY COTTAGES

★★★

The cottages are situated in a quiet rural location, are modern and well equipped near shops.

T: 01624 621254 E: rcain@mcb.net

W: cottaguide.co.uk



From £250-£380 per week

Sleeps up to 5 **I7**

JOEY DUNLOP FOUNDATION

★★★

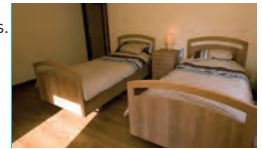
Designed and equipped to the highest standards our apartments have been described as one of the best level accessible facilities within the British Isles.

T: 01624 677741 / 07624 429286

E: kevinquirk@hotmail.com

W: joeydunlopfoundation.com

NAS- M3IE



From £350-£500 per week

I6

KEELING HOLIDAY APARTMENT

★★★

Self contained apartment with open countryside views and easy access to bus and electric tram route.

T: 01624 676351 E: keeling@manx.net

W: keeling-im.com



From £280-£400 per week

Sleeps up to 4 **H9**

ROSE COTTAGE, LAXEY

★★★

In an idyllic setting near the beach, harbour, trams and hills, our traditional 17th century stone cottage waits to welcome you.

T: 0208 455 9596 E: rosecottlaxey@hotmail.com

W: www.peterhall1.plus.com/rosecottage



From £282-£450 per week

Sleeps up to 5 **G9**

LAXEY HARBOUR CHALETs

★★★★★

BREEZE HILL, LAXEY, ISLE OF MAN, IM4 7DL

Tranquil south facing riverside location alongside the harbour with open sea views. Choice of 1 or 2 bedroom accommodations. Beach and country walks minutes away. Warm welcome from Manx owners. No pets.

T: 01624 861581

E: info@laxeychalets.com

W: laxeychalets.com



From £325-£730 per week

Sleeps up to 4 **G9**

ARRANDALE APARTMENTS

★★★

Situated in central Douglas on a beautiful Victorian garden square, close to all amenities.

T: 01624 674 907 E: arrandale@manx.net

W: arrandale.com



From £50 per night, £250 per week

I7

FAIRY LODGE

★★★

Comfortable, fully equipped accommodation with rural views. Convenient for Douglas and airport. Bus stop nearby Santon railway station.

T: 07624 317237 E: jane_shutt@yahoo.com



From £250 per unit per week

Sleeps up to 4 **K5**

FOLLOW US ONLINE...

@VISITISLEOFMAN

/VISITISLEOFMAN

YOUTUBE.COM/VISITISLEOFMAN

INSTAGRAM.COM/VISITISLEOFMAN



EXPLORE MORE ONLINE:
 visitisleofman.com

Isle of Man Stay on a Farm

Stay on a Farm

Relax and Enjoy!

www.isleofmanstayonafarm.com

Experience

- High-quality accommodation
- Genuine working farms
- Fabulous local produce
- Close to "Dark Skies" sites
- Outstanding locations
- Open all seasons

DOUGLAS AND THE EAST

PEEL AND THE WEST

PORT ERIN AND THE SOUTH

RAMSEY AND THE NORTH

CAMPING AND HOSTELS



PEEL

& the West



SEE...

...a spectacular west coast sunset from the secluded beaches or one of the many secret bays.



HEAR...

...the waves crashing against the tail of rocks which jut out into the Irish Sea at Niarbyl Bay.



SMELL...

...the woody aroma of kippers being smoked at Moore's Kipper Factory.



TASTE...

...the world renowned Manx Queenies on offer from the restaurants and fish cabins along Peel quayside and seafront.



TOUCH...

...the soft sand as you walk barefoot across the large sandy bay of Peel Beach.

LANGTOFT MANOR

★★★★★

BALLAGYR LANE, PEEL, IM5 2AD



Lovely manor, totally refurbished, set in 2½ acres of gardens. Beautiful dining hall with an American/German feel, amazing artefacts; off which is a lovely drawing room with a wood burner, plasma screen TV, tea/coffee facilities, WiFi, internet for your business/holiday comforts.

- Beautiful ensuite rooms
- Sourced local products for a lovely breakfast.
- Afternoon teas with homemade cakes.
- Coastal walks, Victorian railtracks – paradise for bird watchers.

T: 01624 843575 / 07624 454416
E: langtoftmanor@gmail.com W: peel-holidays.com



From £40 per night

G4

THE FERNLEIGH

★★★★

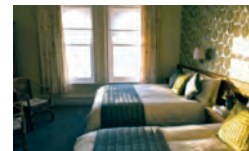
Excellent sea views and comfortable beds.

T: 01624 842435 E: fernleigh@manx.net
W: isleofman-bedandbreakfast.com



From £23-£42 per person

G3



WALDICK GUEST HOUSE

★★★

The Waldick is located in a beautiful sea view position, overlooking the Irish Sea and magnificent historic Peel castle.

T: 07624 471228 E: info@waldickhotel.co.uk
W: waldickhotel.co.uk

From £40-£45 per night

G3



LILY BANK LODGES

★★★★★

KIONSLIEU HILL, FOXDALE, IM4 3HB

These beautiful lodges are open all year with full central heating and Wi-Fi included. Centrally located for easy access all over the Island. Perfect for any length of stay.

T: 07624491777
E: lilybanklodges@manx.net
W: lilybanklodges.com



From £80-£170 per night

Sleeps up to 4

I4



ALBANY HOUSE B&B

★★★★★

9 ALBANY ROAD, PEEL, IM5 1JS

Luxury ensuite rooms and a hearty Manx breakfast awaits you at, cosy Albany House. An oasis in the centre of Peel. Minutes' walk to the beaches, bars, restaurants and shops. Bus stop just outside. Ideal for holiday makers and business people. Parking and Wifi available.

T: 07624 483866
E: albanymouseiom@msn.com
W: manxbedandbreakfast.com



From £35-£45 pn, pp

Sleeps up to 6

H3



THE OLD STABLE (KIRK MICHAEL)

★★★★★

BERK, PEEL ROAD, KIRK MICHAEL, IM6 1AP

Quiet rural location, sea views, near beaches, about half a mile from Kirk Michael village and TT course. The cottage is presented to a high standard, offering two bedrooms (double, twin), both en-suite, dining room/lounge, sunroom and luxury kitchen. Ample parking and a large garden. Free Wi-Fi and Sky TV.

T: 01624 878039
E: info@theoldstable.net
W: theoldstable.net

From £375 per week

Sleeps up to 4

F5



AALIN VIEW

★★★★★

Actual photograph taken from front garden. Aalinview enjoys one of the most stunning locations here on the Isle of Man.

T: 01624 843740 E: mickav57@gmail.com
W: aalinview.co.uk



From £37 per person per night

G3



FFALD Y BRENIN

★★★★★

Delightful, spacious and private room with patio doors leading to the garden and private patio area, which overlooks adjacent farmland.

T: 01624 840 850 E: ffaldybreniniom@gmail.com
W: bedandbreakfastisleofman.com



From £80-£100 per room

Sleeps up to 3

H3



PEEL POST OFFICE APARTMENT

★★★★★

DOUGLAS STREET, PEEL, IM5 1BB

Bright modern apartment located in the centre of Peel. Lovely open plan living room/ fully equipped kitchen and dining area. Two bedrooms which can be configured as two doubles or a double and twin. Everything you need for a relaxing stay.

Peel Castle, Cathedral, beach, swimming pool, supermarket, bank, chemist, pubs and restaurants all within easy reach.

Free WIFI and parking.

T: 07624 425002 E: peelpostoffice@gmail.com
W: peelonline.net



From £500-£850 per week

G3



BEN-MY-CHREE BEACH HOLIDAY COTTAGE

★★★★

Seafront cottage with spectacular views to Viking Castle. Nearby shops, restaurants, beach cafes, bars, sandy beaches, marina, harbour, seals, diving gannets, basking sharks.

T: 07624 402316 E: jenniquiggin@hotmail.co.uk
W: peel-holiday-cottage.com

From £495 per week Sleeps up to 4 **G3**



STABLES COTTAGE, GREEBA

★★★★

Converted Manx stone barn, amidst farmland, accommodation on one level. Private parking, garden & enclosed field. Well-behaved dogs are welcome.

T: 01624 852984 E: magcolin@manx.net

From £275-£400 per week Sleeps up to 2 **H5**



CAMMALL FARM

★★★★

Situated on the western side of the Island, Cammall Farm offers a beautiful location for your stay and an excellent location base for any type of holiday on the Isle of Man.

T: 01624 878872 E: info@cammallfarm.co.uk
W: cammallfarm.co.uk

From £525 per week Sleeps up to 6 **E5**



MOANEY MOAR HOLIDAY COTTAGES

★★★

Two holiday cottages set in Manx countryside on a farm on the west of the Island.

T: 01624 801627 E: m.m.cronky@iom.com

From £36-£57 per night Sleeps up to 6 **G5**



ISLE of MAN
STAY on a FARM

KIONE TURRYS

★★★★

Beautifully appointed cottage. A minute's walk to historic castle, marina, sandy beach & quayside attractions. Convenient central location, parking, extras included.

T: 01624 842772 E: kt23@manx.net
W: holidaycottage-isleofman.com

From £80 per night / £375 per week Sleeps up to 4 **G3**



THE FUCHSIAS

★★★★

The Fuchsias bungalow is located in the idyllic hamlet of Glen Wyllin, a 10 minute walk from the beach.

T: 01624 619915 E: westhaven-iom@hotmail.co.uk
W: isleofmanholidaycottages.com

From £475-£575 per week Sleeps up to 4 **F5**



THE LODGE

★★★★

Nestled in Langtoft Manor's grounds, the Lodge has recently benefitted from renovation work. Kitchen, dining area & lounge leading to garden. Ideal for small family or couple. Full central heating.

T: 01624 843575 / 07624 454416
E: langtoftmanor@gmail.com
W: peel-holidays.com/the-lodge.html

From £252-£525 per week Sleeps up to 4 **G4**



THE OLD BYRE

★★★★

A comfortable, sunny, well equipped sandstone cottage with garage and walled garden. Convenient for the beach, shops, buses & fine coastal walking.

T: 01483 415888 / 07960860959
E: voirrey.heath@gmail.com W: theoldbyrepeel.co.uk

From £450-£650 per week Sleeps up to 6 **G3**



CRONK AASHEN COTTAGE

★★★

A warm welcome from the owner Glynn. Converted stone barns. One with views overlooking the sea, another over looking the hills. Parking available.

T: 01624 878305 W: cronkaashen.co.uk
E: enquiries@cronkaashen.co.uk

From £275 per week Sleeps up to 4 **F5**



SANDHOUSE

★★★

1.5 miles from Peel. A countryside setting with beautiful views, families welcome, ample parking, large garden, no pets please.

T: 07624 242846 E: sandhouse@manx.net

From £550-£1200 per week Sleeps up to 8 **H4**



VISITOR INFORMATION

The welcome centre makes Island travel easy with all the tickets and timetables you may need for your stay.

LOCATION
SEA TERMINAL BUILDINGS,
DOUGLAS

OPENING TIMES
MON TO SAT 8AM - 6PM,
SUNDAYS (MAY-SEPT) 9AM-2PM

CONTACT
CALL +44 (0)1624 686766 OR
EMAIL TOURISM@GOV.IM

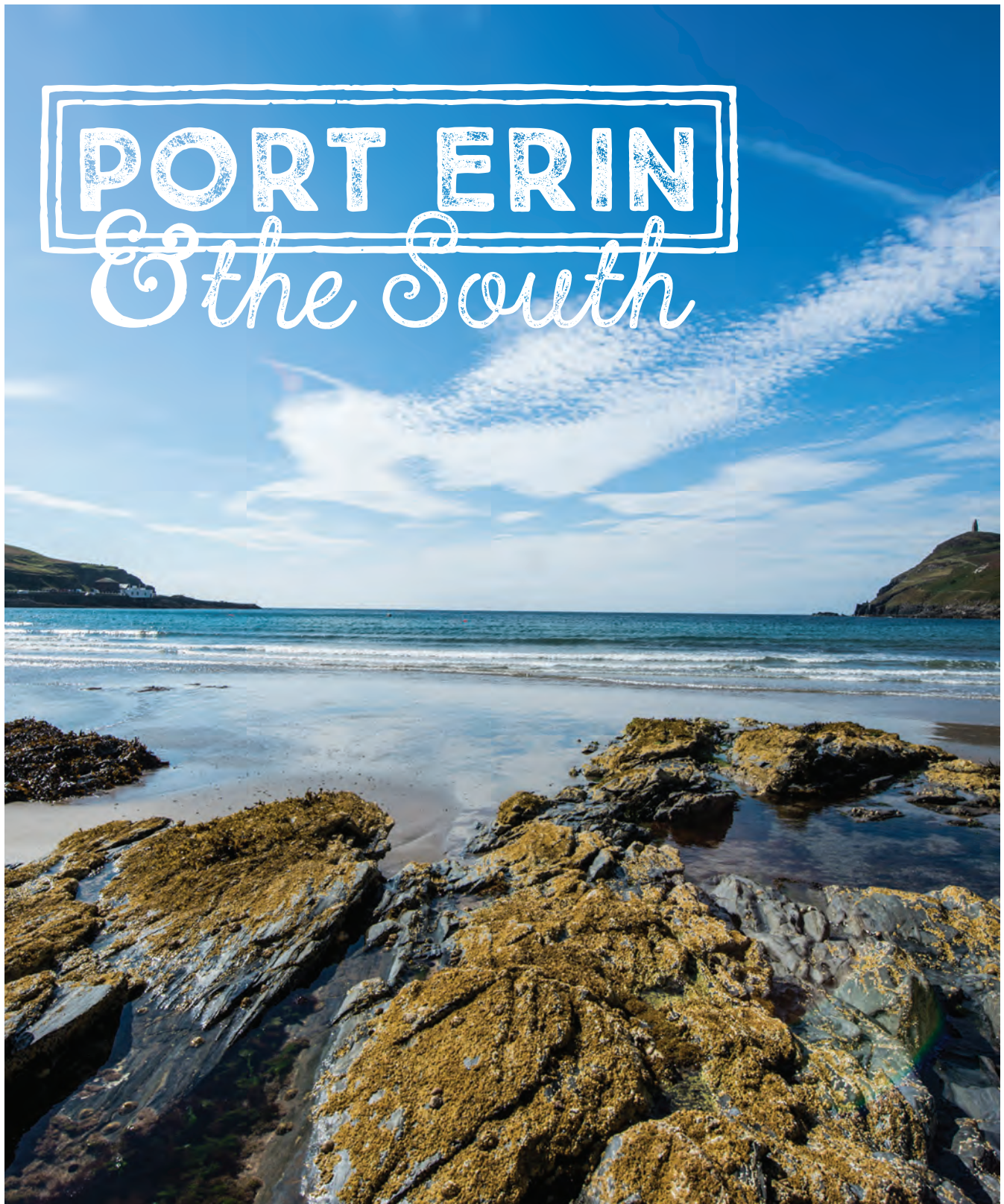
EXPLORE MORE ONLINE:
visitisleofman.com

Go faster with **4G...**



PayGo
fantastic service coverage & speeds

call 624 624 see in-store
visit manxtelecom.com/paygo
manx telecom



DOUGLAS AND THE EAST

PEEL AND THE WEST

PORT ERIN AND THE SOUTH

RAMSEY AND THE NORTH

CAMPING AND HOSTELS



SEE...

...basking sharks in Manx waters when you set sail on a boat trip from Port St Mary harbour.



HEAR...

...the seals bark as they bask on the rocks at the Calf of Man.



SMELL...

...the smoke of the steam engines as they pass through the picturesque stations of Ballasalla and Castletown.



TASTE...

...the delicious local confectionery such as fudge, truffles, chocolates and the famous Manx Knobs, all created at The Original Manx Fudge Factory in Ballasalla.



TOUCH...

...centuries of history as you walk around the towering limestone walls and climb the stone spiral staircases of Castle Rushen.

ROWANY COTTIER



★★★★★

SPALDRICK AVENUE, PORT ERIN, IM9 6PE

Stunning views over Port Erin bay. Spacious rooms. Guest lounge. Large garden. Private parking. Breakfast Award. Warm welcome and local knowledge from Manx hosts John and Heather.

T: 01624 832287 / 07624416990
E: rowanycottier@gmail.com
W: rowanycottier.com



From £40 per night

L2

AARON HOUSE

★★★★★

Enjoying spectacular sea views. Come & discover: Award winning breakfast & hospitality. Panoramic coastlines. Enchanting secret glens & walks. Heritage sites & transport. Peaceful & relaxing.

T: 01624 835702 E: aaronhouse@manx.net
W: aaronhouse.co.uk



From £39 per night

L3

BALLAMADRELL ACCOMMODATION

★★★★★

Enjoy a relaxing and friendly stay. Ideally located in the heart of Port Erin near to the beach, restaurants, pubs and shops. All guests made to feel at home.

T: 01624 830890/ 07624 481851
E: diane7@manxbroadband.com



From £31-£39.50 per person per night

L2

BEACHCROFT GUEST HOUSE

★★★★★

Beachcroft is close to beach, public transport and shops. It has ground floor en-suite rooms and off road parking.

T: 01624 834521 E: beachcroft@manx.net



From £38-£40 pppn

Sleeps up to 6

L1

BREAGLE GLEN B&B

★★★★★

Superb breakfasts excellent luxury beds, 5 mins to beach, steam railway, buses and great eateries. We will do all we can to ensure you have a wonderful stay.

T: 01624 834614 E: iombandb@manx.net
W: isleofmanaccommodation.com



From £49-£79 per night

Sleeps up to 5

L2

FRANCORCHAMPS

★★★★★

Friendly, family run, superb sea views, 3 en-suite rooms, local produce, off-road parking, bus route. Nominated for 'Pride of Man' award 2016.

T: 01624 823635 W: francorchamps.co.uk
E: dotandstuart@francorchamps.co.uk



From £38 per person

Sleeps up to 6

L4

BALMORAL GUEST HOUSE

★★★★

Unique promenade position with stunning views of Port Erin Bay & Bradda Head. Sit & relax on our balcony & enjoy the beautiful sunsets.

T: 01624 833126 E: balmoralpe@iom.com
W: balmoralporterin.co.uk



From £35 per night

Sleeps up to 4

L2

BALLAHOWIN COURTYARD



★★★★★

BALLAHOWIN FARM, BRAAID ROAD, ST MARKS, IM9 3AS

Ballahowin Courtyard offers a mix of traditional and contemporary style cottages furnished and fitted to ensure every comfort. Choosing Ballahowin will provide you with a peaceful and delightful rural escape.

T: 01624 851659 / 07624 472767
E: enquiries@ballahowin.com
W: ballahowin.com



From £350-£850 per week

Sleeps up to 6

J6

GRENABY ESTATES

★★★★★

GRENABY MOOAR, GRENABY ROAD, BALLASALLA, IM9 3BD

Magnificent properties with spectacular sea views in stunning locations, fully equipped and finished to the highest standard. Your luxurious home from home. A warm welcome awaits.

T: 01624 829565
E: office@grenabyestates.com
W: grenabyestates.com



From £100 per night

Sleeps up to 6

K4



SEAFARER'S REST

★★★★★

A luxury 5 star establishment with modern facilities. In a charming location. Great stay for large and extended families, multiple groups or organisations.

T: 01624 813243 / 07624 333243
E: booking@sostayawhile.com
W: sostayawhile.com



From £700-£2100 per week

Sleeps up to 10

L5



1&2 MANX MEWS

★★★★★

1 & 2 MANX MEWS, MAINE ROAD, NR PROMENADE, PORT ERIN, IM9 6LQ

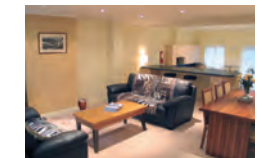
Modern self-catering, short distance from Port Erin beach. 3 bedrooms, 1 en-suite, family bathroom and g/f cloaks. Spacious split-level lounge-diner and kitchen with secluded garden. Access to pool. 5 minutes walk from Rowany Golf Course, Steam Railway and Calf Cruises.

T: 01624 833116 E: enq@manxmews.com
W: manxmews.com

From £499 per night

Sleeps up to 7

L2



BALLADUKE FARMHOUSE

★★★★★

Manx stone 4 bedroomed Farmhouse, sleeps 6. Suitable for small children. Magnificent sea & country views. Ample parking. Contact Elaine.

T: 01624 822250 E: balladukefarm@gmail.com
W: balladuke.co.uk

From £475 per week

Sleeps up to 6

K4



APARTMENT 1 - DERBY COURT

★★★★

Comfortable ground floor apt. Two bedrooms, ensuite. Views of Langness. Lounge Dining/ Kitchen. Outside space and parking.

T: 01624 837633 E: carole-nutt@manx.net
W: visitisleofman.com / iknow-uk.com

From £85 per night Sleeps up to 4 **K2**

DREEMFROY BARN AND COTTAGE

★★★★

A warm welcome awaits you at either Dreemfroy Barn or Dreemfroy Cottage which are both set in the heart of the Manx countryside. Small dogs only.

T: 01624 851408 W: dreemfroy.com
E: monaradcliffe@manx.net



From £350 per week Sleeps up to 6 **J5**

HARBOUR VIEW APARTMENT

★★★★

A luxury three bedroomed apartment with superb views over the picturesque harbour of Port St Mary. Free WiFi available. Private parking.

T: 01624 833133 E: sarah@keggen.net
W: harbourviewapartment.com



From £630 per week Sleeps up to 6 **L2**

SPALDRICK VIEW COTTAGE

★★★★

Former fisherman's cottage with spectacular sea views. Ideal location for walking and boat trips. 5 minute walk to village shops and harbour.

T: 01624 814778 E: fdaveg@manx.net
W: spaldrickview.com



From £525 per week Sleeps up to 6 **L2**

SURFSIDE

★★★★

Delightful cottage with spectacular views. Central position provides access to all amenities. Easy parking. Ideal for walking, cycling and relaxing.

T: 01624 832224 E: surfsideholiday@manx.net
W: surfsideholiday.co.uk



From £460-£560 per week Sleeps up to 2 **L3**

THE STABLE AT GLENDOWN FARM

★★★★

Cosy cottage on a family dairy farm. Ideal location for Port St Mary, Port Erin beaches, coastal walks and steam trains.

T: 01624 834699 / 07624497098
E: derek.cain@manx.net W: glendownfarm.com



From £400-£695 per week Sleeps up to 6 **L2**

THIE-NY-SOALT

★★★★

Very comfortable modern cottage, wonderfully situated for all the Island can give you with safe off road parking.

T: 01624 835700 / 07624 471235
E: ken.legear@manx.net W: thienysoalt.co.uk



From £399-£525 per week Sleeps up to 4 **K3**

CHERRY ORCHARD APARTMENTS

★★★

Book online - cherry-orchard.com

T: 01624 833811 W: cherry-orchard.com
E: enquiries@cherry-orchard.com



From £18-£40 per night Sleeps up to 4 **L2**

DUBBEY MOOAR

★★★

Traditional Manx cottage with stunning views across Castletown Bay. Cottage of character with plenty of space.

T: 01202 841476 E: hoile@btconnect.com
W: manxcottages.co.uk



From £550 per week Sleeps up to 6 **L4**

MEADOWSIDE

★★★

Well equipped comfortable house in quiet location. Hill views to front and rear, a level walk to the beach. Local train service and close to village.

T: 01707 651341 E: nandaalexander@btopenworld.com
W: meadowside.org.uk



From £385-£405 per week Sleeps up to 4 **L2**

PEACH TREE COTTAGE

★★★

Delightful family cottage, close to the beach, shops and amenities. Very popular with everyone. Cherry Tree House the same.

T: 01624 833502 E: mikequirk@hotmail.co.uk
W: cottagemann.co.uk



From £295-£595 per night Sleeps up to 6 **L2**

SEA FRONT HOLIDAY FLATS

★★★★

Comfortable, well appointed flats. Superb position on promenade. Easy access to village and shops. Sandy beach just across the road.

T: 01624 835220 E: seafront@manx.net
W: seafrontflats.com



From £20 per day £282 per week Sleeps up to 4 **L2**

WESTWOOD

★★★

Your comfortable home from home, a well equipped bungalow, large enclosed garden. Quiet rural location, close to Port Erin.

T: 01624 836228 E: westwoodiom@manx.net



From £40 per person night Sleeps up to 6 **G3**

KERROOBEG COTTAGE

★★★★

Recently renovated Manx cottage with 2 bedrooms. Sun-room overlooking south coast. Set at the foot of South Barrule in a remote, tranquil location with incredible views.

T: 07921 997224 E: contact@isleofmancottage.org
W: isleofmancottage.org



From £70-£200 per night Sleeps up to 4 **J4**

BEACHCOMBER'S COTTAGE

★★★★★

MARINA LANE, PORT ERIN, IM9 6LB

Self-catering cottage beautifully renovated. One minute from Port Erin beach, shops and Steam Railway. Perfect for families, cyclists, walkers and bikers. Dogs welcome.

Well equipped kitchen with dishwasher. Three bedrooms; two with double beds and one with bunkbeds.

T: 07624409719 E: dequayle@hotmail.co.uk
W: airbnb.co.uk



From £95 per night, £515 per week **K2**

DOUGLAS AND THE EAST

PEEL AND THE WEST

PORT ERIN AND THE SOUTH

RAMSEY AND THE NORTH

CAMPING AND HOSTELS

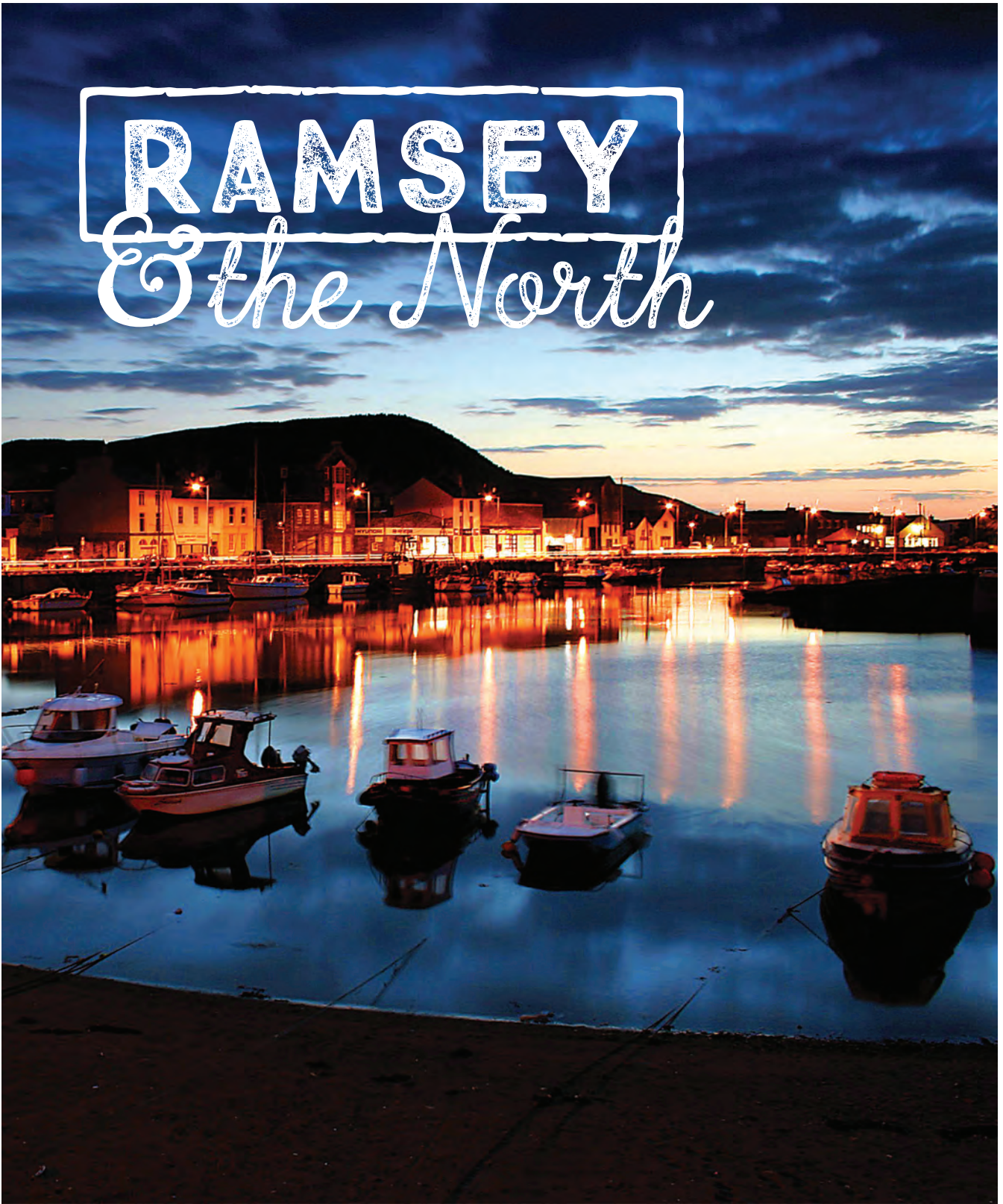
DOUGLAS AND THE EAST

PEEL AND THE WEST

PORT ERIN AND THE SOUTH

RAMSEY AND THE NORTH

CAMPING AND HOSTELS



RAMSEY

& the North



SEE...

...stunning views of coast and countryside travelling along the famous TT Mountain Course or on the Manx Electric Railway.



HEAR...

...the call of the wild and exotic species of the many animals at Curraghs Wildlife Park.



SMELL...

...seasonal delights that can be found growing in the gardens and woodland at Milntown Estate.



TASTE...

...delicious local produce that is used to create mouth-watering meals at the Cook Shack on one of Vivaldi Catering's cookery courses.



TOUCH...

...rocks and waterfalls as you negotiate a river bed on one of the Venture Centre's gorge walks.

CROIT-NY-BANE FARM

★★★★★

ANDREAS, ISLE OF MAN, IM7 3EB



Our award winning farmhouse nestles at the foot of the Bride hills, surrounded by our working beef and sheep farm. Set in 170 acres of tranquil, unspoilt countryside far from the stresses of everyday life. Three beautiful en-suite rooms.

Enjoy a hearty breakfast made with the finest local produce whilst taking in the breathtaking views. Watch cows and calves grazing and glorious sunsets from our spacious guest conservatory.

Sandra and Allan, your hosts, are Manx born farmers and both have a wealth of local knowledge.

T: 01624 880316 E: mail@croit-ny-bane.co.uk

W: croit-ny-bane.co.uk



From £85-£100 per night

Sleeps up to 6

B8

BALLACOWELL B&B

★★★★★

Ballacowell offers a village location with tranquil views of the hills within walking distance of Sulby village.

T: 01624 897773 E: majbedey@ballacowell.co.uk

W: ballacowell.co.uk



From £36-£44 per night

E7



BAIE MOOAR GUESTHOUSE

★★★★★

A stunning guest house with panoramic views over the bay & towards Snaefell. Recently refurbished with seven bright & spacious bedrooms, all en-suite.

T: 01624 819691 M: 07624 304403

E: bookings@baiemooar.com W: baiemooar.com



From £70-£130 per night

D9



YN THIE JIARG

★★★

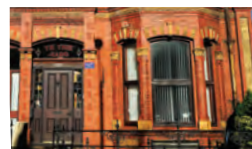
This popular family run bed and breakfast is situated only 5 minutes from the town centre and all its amenities.

T: 01624 816786 / 07624 222203

E: yn.thie.jiarg@hotmail.co.uk

From £35 per person, per night

E9



BALLACANNELL

★★★

A unique opportunity to stay at a Northern, Rural Smallholding. Star rated Accommodation with a Full Manx Breakfast.

T: 01624 813358 M: 07624 470507

E: dotprice@manx.net

From £80 per night

C9



SUMMERLANDS B&B

Rating pending

Superior accommodation at reasonable prices. 1 kingsize ensuite, 1 twin/super king with private bathroom. Parking available. Hearty breakfast served with homemade preserves. Within walking distance of all local amenities.

T: 01624 812695 / 07624 255591

E: info@summerlandsbandb.com

W: summerlandsbandb.com



From £65 per room

E9



GARDEN COTTAGE

★★★★★

Cosy, comfortable and tastefully furnished, Garden Cottage offers a peaceful base for you to explore the Island.

T: 01624 897834 E: goldies.loughan@gmail.com

W: gardencottage.co.im

From £350 per week

Sleeps up to 4

C7



GRANGE BARN

★★★★★

Lovely cottage located on a small farm in a secluded edge of village location with wonderful views. Two bedrooms and two bathrooms.

T: 07624 456917 E: guyw@manx.net

W: grangeebarn.co.uk

From £455 per week

Sleeps up to 4

E7



MILNTOWN APARTMENTS

★★★★★

LEZAYRE ROAD, RAMSEY, ISLE OF MAN, IM7 2AB



Set in the beautiful grounds of the Milntown Estate are 3 stunning self catering apartments. The apartments each sleep 4 individuals and are open all year round. Milntown, is the Island's most historical estate, it has a renowned cafe and 15 acres of stunning gardens and woodland. It is situated on the TT course half a mile to the west of Ramsey.

T: 01624 812321

E: milntownapartments@manx.net W: milntown.org



From £500-£700 per week

G4

BALLACHRINK FARMHOUSE

★★★★★

Lovely farmhouse in a quiet rural location. A comfortable B&B from which to explore & enjoy the Isle of Man.

T: 01624 880364 E: ballachrinkfarm@manx.net

W: ballachrink.co.uk



From £40-£45 per night

C9



DOUGLAS AND THE EAST

BALLACAMAISH FARM COTTAGES

★★★★★

Short breaks of 4 nights + flexible arrival day available all year in barn conversion cottages.

T: 01624 880641 W: manxfarmcottages.com
E: ballacamaishfarmcottages@manx.net



From £70-£100 per night Sleeps 4 or 5 **B7**



EAST BALLABANE FARMHOUSE

★★★★★

The farmhouse is a spacious property with many period features, a proper home from home.

T: 01624 619915 E: westhaven-iom@hotmail.co.uk
W: isleofmanholidaycottages.com



From £595-£695 per week Sleeps up to 5 **B8**



PEEL AND THE WEST

YN THIE THOOIT

★★★★★

YN THIE THOOIT, LHEN BRIDGE, ANDREAS

For a charming break on the Isle of Man, stay with us in our cosy, thatched Manx cottage. Owned and operated by Manx National Heritage, your holiday rental helps save a precious piece of our beautiful Island.

T: 01624 648015
E: staywithus@mh.gov.im
W: manxnationalheritage.im/visit



From £595 per week **B7**



RHENNIE FARM

★★★★★

One double, one twin bedroom, both ensuite with open plan living areas. Highly recommended view from patio.

T: 01624 861254 E: rhenniefarm@manx.net
W: rhenniefarm@gmail.com



From £350-£450 per week Sleeps up to 4 **F9**



PORT ERIN AND THE SOUTH

BALLACHRINK BUNGALOW

★★★★★

Well equipped & comfortable. Everything you need for your self-catering holiday. A quiet & restful base, after a days exploring.

T: 01624 880364 E: ballachrinkfarm@manx.net
W: ballachrink.co.uk



From £320-£450 per week Sleeps up to 4 **C9**



SOALT BEG COTTAGE

★★★★★

Soalt Beg Cottage is a detached stone barn conversion, situated within the peaceful rural countryside, close to the beach.

T: 01624 897731 E: steveskillicorn@manx.net

From £250 per week Sleeps up to 4 **D6**



BALLACRYE BEG

★★★★★

A beautiful well-equipped and comfortable cottage adjoining a traditional Manx farmhouse in a lovely country setting.

T: 01624 898003 E: kerrison@iom.com

From £280 per week Sleeps up to 2 **C7**



WHITE GABLES COTTAGE

★★★★★

Something Special - detached Cottage with en-suite bedroom, lounge, kitchen in magnificent countryside. 7 miles from Ramsey - Private entrance/garden Sleeps 2.

T: 01624 897926 E: whitegables@manx.net

From £370 per week Sleeps up to 2 **D6**



RAMSEY AND THE NORTH

CRAIG COTTAGES

★★★★★

Out of season short stays or long stays. With double glazed, central heating in both cottages, providing an all year round retreat.

T: 01624 880242 E: craigcottages@manx.net
W: craigcottages.co.uk



From £350-£550 per week **D7**



BALLAVARTEEN HOLIDAY COTTAGE

★★★★★

Single story detached 2 bedroom cottage in idyllic country location on a small working farm. Private south facing patio. 2 miles from Ramsey.

T: 01624 880801 E: ballavarteen@manx.net
W: ballavarteen.co.uk

From £400-£550 per week Sleeps up to 4 **C8**



CRAIG VIEW COTTAGES

★★★★★

Out of season short stays or long stays. With double glazed, central heating in both cottages, providing an all year round retreat.

T: 01624 880242 E: craigcottages@manx.net
W: craigcottages.co.uk



From £420-£665 per week **D7**



BALLAGARROW COTTAGE

★★★

Ideally located, set in 20 acres of countryside but only 1.5 miles from Ramsey town. Ample parking. Friendly atmosphere.

T: 01624 813595 E: jackjones@manx.net

From £200-£400 per week Sleeps up to 2 **E9**



CAMPING AND HOSTELS

CREG NY GEAY

★★★★★

Close to Ramsey, fine Arts and Crafts house sleeping 6 with panoramic sea views from its stunning coastal position.

T: 07624 237219 E: shaunmurphy@manx.net
W: isleofmanseasideholidays.com



From £750 per week Sleeps up to 6 **E10**





GLEN WYLLIN CAMPSITE

★★★

GLEN WYLLIN, KIRK MICHAEL, IM6 1AL

Family Campsite. Price includes; showers, toilets, kitchen, TV room, (Group Discounts).

Shop, electric hookups, 6 berth furnished tents, play park & BMX, local amenities, beaches, regular bus routes.

T: 01624 829565

E: glenwyllincampsite@outlook.com

W: glenwyllincampsite.com



From £8 per Adults, £5 per Child per night

F5

CRONK AASHEN CAMPSITE

★★★

A warm welcome to our small, level, quiet, rural, family run site. Free showers, cooking facilities and parking available. Hardstandings for Motorhomes/Caravans. Wonderful sea and hill views. Hook-ups, laundry facilities, D.I.Y, kennelling available if required.

T: 01624 878305 E: enquiries@cronkaashen.co.uk

W: cronkaashen.co.uk

From £8 per person, per night

F5

GLEN DHOO CAMPING SITE

★★★

Located on TT course the site has Toilets, Showers, Laundry. Electric hook ups. Open for TT Fortnight and MGP Fortnight 2017 only.

T: 01624 621254 E: rcain@mcb.net

W: ukcampsites.co.uk

From £9 per person, per night

I7

GLENLOUGH CAMPSITE

★★★

Family run campsite. Ideally situated - regular bus route. PODs, Motorhomes, hardstanding, electric hookups. TV room, Wifi. All welcome.

T: 01624 852057 W: glenloughcampsite.com

E: booknow@glenloughcampsite.com



From £8-£10 per night

I6

LAXEY CAMPSITE

★★★

Pleasant family site located 1/2 mile from the beach. All facilities on the campsite are provided at no extra charge.

T: 07624 499281 E: garff@manx.com

W: garff.im



From £8-£14 per night

G9

PEEL CAMPING PARK

★★★

Quiet level campsite with modern facilities. Located adjacent to town centre and swimming pool. Hardstanding and electric hook ups available.

T: 01624 842341 E: ptc@ptc.org.im

W: peelonline.net



From £7.50 per night

G3

SABA'S GLEN YURT

Approved

Glamping Experience! Perfect balance between getting back to basics and getting lost in the romance of nature.

T: 01624 851263 E: sgyurt@manx.net

W: sabasglenyurt.com



From £55-£245 per night/week

I6

SULBY COMMUNITY HALL

Approved

Situated close to the TT course, offering comfortable accommodation for groups. Beautiful countryside, local shop and Public House.

T: 01624 890183 E: lezayrecom@manx.net

W: lezayreparish.org



From £112 per night

Sleeps up to 10

D7

A SENSE OF TASTE

Pick up your Taste directory when you arrive on the Island, or you can view the directory online at visitisleofman.com/taste

ACCOMMODATION INDEX

ACCOMMODATION NAME	PHONE NUMBER	EMAIL	WEBSITE	STAR RATING	TYPE	GRID REF	PAGE
1 & 2 Manx Mews	01624 833116	enq@manxmews.com	manxmews.com	4 star	SC	L2	58
Aalin View	01624 843740	mickav57@gmail.com	aalinview.co.uk	4 star	GA	G3	55
Aaron House	01624 835702	aaronhouse@manx.net	aaronhouse.co.uk	5 star	GA	L3	58
Admiral House	01624 629551	enquiries@admiralhouse.com	admiralhouse.com	3 star	H	J7	49
Albany House B&B	07624 483866	albanyhouseiom@msn.com	manxbedandbreakfast.com	4 star	GA	H3	55
All Seasons	01624 676323	bookings@hotels-iom.com	hotels-iom.com	3 star	GA	I7	51
Annie's Place	01624 823355	annielowey@gmail.com	-	2 star	SC	K3	-
Apartment 1 - Derby Court	01624 837633	carole-nutt@manx.net	visitisleofman.com / iknow-uk.com	4 star	SC	K2	59
Arrandale Apartments	01624 674907	arrandale@manx.net	arrandale.com	3 star	SC	I7	53
Arrandale House	01624 674907	arrandale@manx.net	arrandale.com	3 star	GA	I7	50
At Caledonia	01624 624569	atcaledonia@gmail.com	caledonia.im	3 star	GA	I8	50
Baie Mooar Guesthouse	01624 819691	bookings@baiemooar.com	baiemooar.com	4 star	GA	D9	61
Ballacamaish Farm Cottages	01624 880641	ballacamaishfarmcottages@manx.net	manxfarmcottages.com	4 star	SC	B7	62
Ballacannell	01624 813358	dotprice@manx.net	-	2 star	GA	C9	61
Ballachrink Bungalow	01624 880364	ballachrinkfarm@manx.net	ballachrink.co.uk	4 star	SC	C9	62
Ballachrink Farmhouse	01624 880364	ballachrinkfarm@manx.net	ballachrink.co.uk	4 star	GA	C9	61
Ballacowell B&B	01624 897773	ballacowell.co.uk	majbedey@ballacowell.co.uk	4 star	GA	E7	61
Ballacrye Beg	01624 898003	kerrison@iom.com	-	4 star	SC	C7	62
Balladuke Farmhouse	01624 822250	balladukefarm@gmail.com	balladuke.co.uk	4 star	SC	K4	58
Ballagarrow Cottage	01624 813595	jackjones@manx.net	-	3 star	SC	E9	62
Ballahowin Courtyard	01624 851659	enquiries@ballahowin.com	ballahowin.com	5 star	SC	J6	58
Ballamaddrell Accommodation	01624 830 890	diane7@manxbroadband.com	-	4 star	GA	L2	58
Ballavarteen Holiday Cottage	01624 880801	ballavarteen@manx.net	ballavarteen.co.uk	4 star	SC	C8	62
Balmoral Guest House	01624 833126	balmoralpe@iom.com	balmoralporterin.co.uk	3 star	GA	L2	58
Beachcomber's Cottage	07624 409719	dequayle@hotmail.co.uk	airbnb.co.uk	4 star	SC	K2	59
Beachcroft Guest House	01624 834521	beachcroft@manx.net	-	4 star	GA	L1	58
Ben-My-Chree Beach Holiday Cottage	07624 402316	jenniquiggin@hotmail.co.uk	peel-holiday-cottage.com	4 star	SC	G3	56
Best Western Palace Hotel and Casino	01624 662662	info@palacehotel.co.im	palacehotel.co.im	4 star	H	I8	48
Bishop's Lodge	07624 439970	thebishopsloodge@gmail.com	-	4 star	SC	J7	52
Breagle Glen B&B	01624 834614	iombandb@manx.net	isleofmanaccomodation.com	4 star	GA	L2	58
Bride Tearooms & Bistro	01624 882005	bridgetearooms@manx.net	bridgetearooms.weebly.com	4 star	GA	I7	-
Cammall Farm	01624 878872	info@cammallfarm.co.uk	cammallfarm.co.uk	4 star	SC	E5	56
Cherry Orchard Apartments	01624 833811	enquiries@cherry-orchard.com	cherry-orchard.com	3 star	SC	L2	59
Cherry Tree House	01624 833502	mikequirk@hotmail.co.uk	Cottagemann.co.uk	3 star	SC	L2	-
Colooneys Farm Cottages	01624 611898	info@colooneys.com	colooneys.com	5 star	SC	J6	52
Cotterdale Apartment	01624 624154	info@cotterdaleapartment.com	cotterdaleapartment.com	4 star	SC	I8	52
Crag Lea Bed & Breakfast	01624 860339	craglea@manx.net	craglea.co.uk	5 star	GA	H9	50
Craig Cottages	01624 880242	craigcottages@manx.net	craigcottages.co.uk	4 star	SC	D7	62
Craig View Cottages	01624 880242	craigcottages@manx.net	craigcottages.co.uk	4 star	SC	D7	62
Creg Ny Geay	07624 237219	shanmurphy@manx.net	isleofmanseasideholidays.com	4 star	SC	E10	62
Croit-ny-Bane Farm	01624 880316	mail@croit-ny-bane.co.uk	croit-ny-bane.co.uk	5 star	GA	B8	61
Cronk Aashen Campsite	01624 878305	cronkaashen.co.uk	enquiries@cronkaashen.co.uk	3 star	CH	F5	63
Cronk Aashen Cottage	01624 878305	cronkaashen.co.uk	enquiries@cronkaashen.co.uk	3 star	SC	F5	56
Cunard Apartments	01624 676728	info@cunard-accom.com	cunard-accom.com	4 star	SC	J7	52
Dreemfroy Barn and Cottage	01624 851408	monaradcliffe@manx.net	dreemfroy.com	4 star	SC	J5	59
Dubbey Mooar	01202 841476	hoile@btconnect.com	manxcottages.co.uk	3 star	SC	L4	59
East Ballabane Farmhouse	01624 619915	westhaven-iom@hotmail.co.uk	isleofmanholidaycottages.com	4 star	SC	B8	62
Ellan Vannin Guest House	01624 674824	info@ellanvanninhotel.im	ellanvanninhotel.im	4 star	GA	J7	51
Fairy Lodge	07624 317237	jane_shutt@yahoo.com	-	3 star	SC	K5	53
Ffald y Brenin	01624 840850	ffaldybreniniom@gmail.com	bedandbreakfastisleofman.com	4 star	GA	H3	55
Francorchamps	01624 823635	dotandstuart@francorchamps.co.uk	francorchamps.co.uk	4 star	GA	L4	58
Garden Cottage	01624 897834	goldies.loughan@gmail.com	gardencottage.co.im	5 star	SC	C7	61
Glen Dhoo Camping Site	01624 621254	rcain@mcb.net	ukcampsites.co.uk	3 star	CH	I7	63
Glen Dhoo Country Cottages	01624 621254	rcain@mcb.net	cottageguide.co.uk	3 star	SC	I7	53
Glen Wyllin Campsite	01624 829565	glenwyllincampsite@outlook.com	glenwyllincampsite.com	3 star	CH	F5	63
Glenlough Campsite	01624 852057	booknow@glenloughcampsite.com	glenloughcampsite.com	3 star	CH	I6	63
Grangee Barn	07624 456917	guyw@manx.net	grangeebarn.co.uk	5 star	SC	E7	61
Grenaby Estates	01624 829565	office@grenabyestates.com	grenabyestates.com	5 star	SC	K4	58
Harbour View Apartment	01624 833133	sarah@keggen.net	harbourviewapartment.com	4 star	SC	L2	59
HQ Bar & Restaurant	01624 676355	hq@hqbar.im	hqbar.im	4 star	SC	I7	52
Joey Dunlop Foundation	01624 677741	kevinquirk@hotmail.com	joeydunlopfoundation.com	3 star	SC	I6	53
Keeling Holiday Apartment	01624 676351	keeling@manx.net	keeling-im.com	3 star	SC	H9	53
Kerroobeg Cottage	07921 997224	contact@isleofmancottage.org	isleofmancottage.org	4 star	SC	J4	59
Kings Guest House	01624 620829	booking@kings.im	kings.im	4 star	GA	I7	50
Kione Turrys	01624 842772	kt23@manx.net	holidaycottage-isleofman.com	4 star	SC	G3	56
Kiwi Holiday Lodge	01624 623534	carolbeattie22@yahoo.com	kiwiholidaylodge.co.uk	4 star	SC	H9	52

ACCOMMODATION NAME	PHONE NUMBER	EMAIL	WEBSITE	STAR RATING	TYPE	GRID REF	PAGE
Knockaloe Beg Farm Guest House	01624 844 279	info@knockaloebegfarm.com	knockaloebegfarm.com	4 star	GA	H3	-
Knockaloe Beg Farm Hostel	01624 844 279	info@knockaloebegfarm.com	knockaloebegfarm.com	Approved	CH	H3	-
Knockaloe Beg Farm Glamping	01624 844 279	info@knockaloebegfarm.com	knockaloebegfarm.com	Approved	CH	H3	-
Knockaloe Beg Farm Cottages	01624 844 279	info@knockaloebegfarm.com	knockaloebegfarm.com	4 star	SC	H3	-
Langtoft Manor	01624 843575	langtoftmanor@gmail.com	peel-holidays.com	4 star	GA	G4	55
Laxey Campsite	07624 499281	garff@manx.com	garff.im	3 star	CH	G9	63
Laxey Harbour Chalets	01624 861581	info@laxeychalets.com	laxeychalets.com	4 star	SC	G9	53
Lily Bank Lodges	07624 491777	lilybanklodges@manx.net	lilybanklodges.com	5 star	SC	I4	55
Lowfield Apartment	07624 277854	lowfield@manx.net	-	4 star	SC	G9	-
Mannin Hotel	01624 602555	info@manninhotel.im	manninhotel.im	4 star	H	I7	49
Meadowside	01707 651341	nandaalexander@btopenworld.com	meadowside.org.uk	3 star	SC	L2	59
Milntown Apartments	01624 812321	milntownapartments@manx.net	milntown.org	4 star	SC	G4	61
Moaney Moar Holiday Cottages	01624 801627	m.m.cronky@iom.com	-	2 star	SC	G5	56
Old Lonan Church Farm Cottages	01624 614441	sue@manxcottages.com	manxcottages.com	5 star	SC	H9	52
Peach Tree Cottage	01624 833502	mikequirk@hotmail.co.uk	cottagemann.co.uk	3 star	SC	L2	59
Peel Camping Park	01624 842341	ptc@ptc.org.im	peelonline.net	3 star	CH	G3	63
Peel Post Office Apartment	07624 425002	peelpostoffice@gmail.com	peelonline.net	4 star	SC	G3	55
Pinfold Holiday Cottages	07624 495931	pauleneghan@manx.net	pinfoldholidaycottage.com	4 star	SC	H9	52
Pleasington Suites	01624 676551	jackydixon@manx.net	pleasington.vpweb.co.uk	3 star	GA	I7	51
Ramillies Garden Apartment	01624 861685	ramillies@manx.net	ramillies.co.uk	4 star	SC	H9	52
Rhennie Farm	01624 861254	rhenniefarm@manx.net	rhenniefarm@gmail.com	4 star	SC	F9	62
Rose Cottage, Laxey	0208 455 9596	rosecottlaxey@hotmail.com	peterhall1.plus.com/rosecottage	3 star	SC	G9	53
Rowany Cottier	01624 832287	rowanycottier@gmail.com	rowanycottier.com	5 star	GA	L2	58
Saba's Glen Yurt	01624 851263	sgyurt@manx.net	sabasglenyurt.com	Approved	CH	I6	63
Salmon River Apartments	07624 430555	claire@salmonriver.im	salmonriver.im	4 star	SC	G9	53
Sandhouse	07624 242846	sandhouse@manx.net	-	3 star	SC	H4	56
Seafarer's Rest	01624 813243	booking@sostayawhile.com	sostayawhile.com	5 star	SC	L5	58
Sea Front Holiday Flats	01624 835220	seafront@manx.net	seafrontflats.com	3 star	SC	L2	59
Seaview Guest House	01624 674090	enquiries@seaview.co.im	seaview.co.im	3 star	GA	I8	50
Sefton Express	01624 824321	info@seftonexpress.co.im	seftonexpress.co.im	4 star	GA	L5	48
Sefton Hotel	01624 645500	info@seftonhotel.co.im	seftonhotel.co.im	4 star	H	I7	48
Shore Hotel Brew Pub (Inn)	01624 861509	shore@manx.net	-	4 star	GA	H4	51
Silvercraigs	01624 677776	silvercraigs@gmail.com	silvercraigshotel.com	3 star	GA	I8	51
Sleepwell Hotels	01624 617068	-	sleepwellhotels.com	3-4 star	H	J7	49
Smeale Farm Cottages	01624 880888	smealecott@manx.net	manxfarmhols.com	4 star	SC	B8	62
Soalt Beg Cottage	01624 897731	steveskillicorn@manx.net	-	4 star	SC	D6	62
Spaldrick View Cottage	01624 814778	fdaveg@manx.net	spaldrickview.com	4 star	SC	L2	59
St. Heliers Guest House	01624 624355	stheliers@manx.net	stheliers.im	3 star	GA	I7	50
Stables Cottage, Greeba	01624 852984	magcolin@manx.net	-	3 star	SC	H5	56
Sugarland Hotel	01624 663456	-	-	2 star	H	J7	-
Sulby Community Hall	01624 890183	lezayrecom@manx.net	lezayreparish.org	Approved	CH	D7	63
Summerlands B&B	01624 812695	info@summerlandsbandb.com	summerlandsbandb.com	Pending	GA	E9	61
Surfside	01624 832224	surfsideholiday@manx.net	surfsideholiday.co.uk	4 star	SC	L3	59
The Ascot Hotel	01624 675081	info@ascotohotel.im	ascotohotel.im	3 star	H	I8	49
The Blossoms	01624 673360	mrsblossoms@outlook.com	-	3 star	GA	I7	51
The Byre at Ballavale Barns	01624 823375	i.wood@mcb.net	thebyre.im	4 star	SC	K5	52
The Devonian	01624 674676	devonian@manx.net	thedeonian.co.uk	3 star	GA	I7	50
The Empress Hotel	01624 661155	reservations@theempresshotel.net	theempresshotel.net	3 star	H	I7	49
The Fernleigh	01624 842435	fernleigh@manx.net	isleofman-bedandbreakfast.com	3 star	GA	G3	55
The Fuchsias	01624 619915	westhaven-iom@hotmail.co.uk	isleofmanholidaycottages.com	4 star	SC	F5	56
The Greaves	01624 861500	-	bedandbreakfastiom.com	3 star	GA	G9	50
The Island & Fairfield Guest House	01624 673418	mail@iomguesthouse.com	iomguesthouse.com	3 star	GA	I7	51
The Old Byre	01483 415888	voirrey.heath@gmail.com	theoldbyrepeel.co.uk	4 star	SC	G3	56
The Lodge	01624 843575	langtoftmanor@gmail.com	peel-holidays.com/the-lodge.html	4 star	SC	G4	56
The Old Stable (Kirk Michael)	01624 878039	info@theoldstable.net	theoldstable.net	5 star	SC	F5	55
The Old Stable (Onchan)	01624 627892	karenclague@manx.net	theoldstable.com	4 star	SC	I8	53
The Stable At Glendown Farm	01624 834699	derek.cain@manx.net	glendownfarm.com	4 star	SC	L2	59
The Sulby Glen Hotel	01624 897240	sulbyglenhotel@manx.net	sulbyglen.net	2 star	H	D7	-
Thie-ny-Soalt	01624 835700	ken.legear@manx.net	thienysoalt.co.uk	4 star	SC	K3	59
Waldick Guest House	07624 471228	info@waldickhotel.co.uk	waldickhotel.co.uk	3 star	GA	G3	55
Westwood	01624 836228	westwoodiom@manx.net	-	3 star	SC	G3	59
White Gables Cottage	01624 897926	whitegables@manx.net	-	4 star	SC	D6	62
Wicklow Hills	01624 620453	wicklowhills@manx.net	wicklowhills.com	3 star	GA	G3	51
Yarari Apartment	07624 496363	kathryn_hodgson@yahoo.co.uk	-	4 star	SC	G3	53
Yn Thie Jiarg	01624 816 786	yn.thie.jiarg@hotmail.co.uk	-	3 star	GA	E9	61
Yn Thie Thooit	01624 648015	staywithus@mnh.gov.im	manxnationalheritage.im/visit	4 star	SC	B7	62

USEFUL TIPS & INFORMATION

MONEY MATTERS:

BANKS AND BANK HOLIDAYS

Most high street banks have premises on the Isle of Man. The opening hours are generally 9.30am to 4.30pm. Bank Holidays are the same as those in the UK with 2 additional holidays - Senior Race Day (TT Races) on the 9th June and Tynwald Day (the Manx National Day) on the 5th July.

CURRENCY INFORMATION

The Isle of Man has its own currency with the same denominations as the UK and still has £1 notes.

UK currency is legal tender in the Isle of Man but Manx currency is not accepted in the UK, although notes can be exchanged at UK banks.

CASH MACHINES

Automated cash machines are available in all the major towns around the Isle of Man. Manx bank notes are dispensed from all cash machines apart from those situated at the Sea Terminal and the Airport, where English notes are issued.

HEALTH:

CHEMISTS

Dispensing chemists are open from 9.00am to 5.30pm Mondays to Saturdays. Outside of these times there are limited opening hours and a duty chemist rota is in operation. This list can be obtained from the Department of Health and Social Care prior to travel. It is also available online and your accommodation provider should be able to provide you with details. Duty Rota hours are from 5.30pm to 6.30pm Monday–Friday (excluding Bank Holidays) and Sundays and Bank Holidays from 12 noon to 1.00pm.

DOCTORS AND HOSPITALS

The Manx Emergency Doctor Service (MEDS) operate an 'Out of Hours' emergency service when doctors' surgeries are closed. The service is contactable on **+44 (0) 1624 650355** and is ONLY available out of hours - 6.00pm to 8.00am Monday to Friday or 24-hours over weekends and Bank Holidays. In the case of an emergency please attend Accident and Emergency (telephone **+44(0) 1624 650040** for A&E enquiries), or for life threatening emergencies please call emergency services on **999**.

Noble's Hospital is situated outside of Douglas at The Strang, Braddan. Should you need to contact the hospital the telephone number is **+44 (0) 1624 650000**. Ramsey Cottage Hospital in the North of the Island can be contacted on **+44 (0) 1624 811811**.

RECIPROCAL HEALTH AGREEMENT: UK residents visiting the Isle of Man will receive free NHS treatment if they become ill whilst here. Statutory charges are applicable for both residents and visitors e.g. prescription charges. Anyone visiting the Island should ensure they have adequate insurance in place in the event of repatriation (return travel to someone's home country) being required. The information regarding the Agreement is correct at the time of publication but visitors are recommended to check the position prior to their visit.

WHILE YOU'RE HERE:

MOBILE PHONES

There are two mobile phone networks operating on the Isle of Man - Manx Telecom and Sure. Each mobile network has commercial agreements with mobile phone networks in the UK, Europe and the rest of the world. It is advisable to check with your own mobile network to determine the level and charges of the roaming services with the Isle of Man providers. Please note the Isle of Man is outside the EU jurisdiction and as such does not benefit from the tariff caps operating within the European Union.

POSTAL SERVICES

The Isle of Man Post Office has, since its formation in 1973, issued distinctive Manx stamps by the Philatelic Bureau. You will need to purchase Manx stamps, from any of the 26 branches Island wide, to post any mail from the Isle of Man.

POLICE

The Isle of Man Police are easily recognisable by their white helmets, and are very approachable should you need any assistance. The Police Headquarters is at Glencrutchery Road, Douglas and the telephone number is **+44 (0) 1624 631212**. In an emergency please dial **999**.

TRAVEL:

GROUP TRAVEL

The Isle of Man remains a popular destination for group travel. For more information about group travel to the Isle of Man and to request a group travel guide please log on to visitisleofman.com/groups

IDENTIFICATION AND PASSPORTS

Passports are not required to enter the Isle of Man if you are travelling from the UK or Ireland, although airlines will require customers to provide some form of photographic identification. European and global travellers generally have to clear customs and passport control on arrival in the UK or Ireland before travelling on to the Isle of Man. If you are planning a night at the Casino you will require some form of photographic identification and if you are hiring a car your full driving licence will be required.

WEATHER AND SHIPPING FORECASTS:

Accurate and up-to-date forecasts are provided by the Ronaldsway Met Office:

Online Information
gov.im/weather

Recorded weather forecast:
0900 624 3300 (Premium rate)

Weatherman - 24 hours:
0900 624 3200 (Premium rate)

Recorded shipping forecast:
0900 624 3322 (Premium rate)

Stunning Service... Stunning View



At Manx Experience Holidays, we specialise in planning Isle of Man trips for overseas visitors

For groups, for families, for couples, for solos

For vacations, for events, for sport, for fun, for relaxation

For culture, for history, for sightseeing

There's something for everyone – and nobody will organise it better for you!

- ✓ Tailor made breaks - packaged for you
- ✓ Your travel and accommodation – all booked
- ✓ The best group allocations - secured
- ✓ Tours and experienced guides - arranged
- ✓ Your Island visit planned from start to finish - done

We're bonded to protect you.

We're Isle of Man based and love the place.

We want you to love it too!

Unrivalled friendly, personal service on the end of a phone – and all at a cracking price!

Example offers

VISITOR GUIDE OFFER:

£310.00
per person

**5 Nights - 3* Ascot Hotel
2 Course Dinner, Bed & Breakfast
5 Day Island Explorer Pass
Return Sea Travel**

RAILWAY EXPLORER BREAKS

Explore the Isle of Man by Vintage railway

**3, 5 & 7 night packages
Accommodation
Travel
Island Explorer Pass**

Keep up-to-date with us on Facebook and read our blog at www.iomevents.com

Is our wonderful Island in your sights?

Then Call the Manx Experience Holidays Reservations team now on

☎ **01624 664460** @ **info@iomevents.com** f **www.iomevents.com**



See the

Isle of Man



from a different perspective...



citywing 

Book online at citywing.com